

# PIERRE GUILLAUME

PARIS



C O N T E M P O R A R Y   P E R F U M E S





## ABOUT THE BRAND

BIOGRAPHY .....	P. 6
-----------------	------

## PIERRE GUILLAUME PARIS

02 COZÉ .....	P. 10
2.1 COZÉ VERDÉ .....	P. 10
03 CUIR VENENUM .....	P. 11
3.1 ARABIAN HORSE .....	P. 11
04 MUSC MAORI .....	P. 12
4.1 LE MUSC & LA PEAU .....	P. 12
05 L'EAU DE CIRCE .....	P. 13
5.1 SUEDE OSMANTHE .....	P. 13
06 L'EAU RARE MATALE .....	P. 14
6.1 VETIVER MATALE .....	P. 14
07 SOLSEKIA .....	P. 16
7.1 GRAND SIÈCLE INTENSE .....	P. 16
7.2 MORNING IN TIPASA .....	P. 17
08 INTRIGANT PATCHOULI .....	P. 18
8.1 L'OMBRE FAUVE .....	P. 18
09 YUZU AB IRATO .....	P. 19
9.1 KOMOREBI .....	P. 19
10 AOMASSAÏ .....	P. 20
10.1 BOUQUET MASSAÏ .....	P. 20
11 HARMATAN NOIR .....	P. 22
11.1 INDIAN WOOD .....	P. 22
11.2 SPICEMATIC .....	P. 23
12 HYPERESSENCE MATALE .....	P. 24
12.1 UN CRIME EXOTIQUE .....	P. 24
13 BRÛLURE DE ROSE .....	P. 25
13.1 LA NYMPHE & LE POÈTE .....	P. 25
14 IRIS ORIENTAL .....	P. 26
14.1 CUIR D'IRIS .....	P. 26
15 ILANG IVOHIBÉ .....	P. 27
15.1 HAPYANG .....	P. 27
16 JARDINS DE KERYLOS .....	P. 28
16.1 BOIS NAUFRAGÉ .....	P. 28
17 TUBÉREUSE COUTURE .....	P. 29
18 CADJMÉRÉ .....	P. 29
19 LOUANGES PROFANES .....	P. 30

19.1 NÉROLI AD ASTRA .....	P. 30
20 L'EAU GUERRIÈRE .....	P. 31
20.1 SORONG .....	P. 31
21 FELANILLA .....	P. 32
22 DJHENNÉ .....	P. 32
23 DRAMA NUUÏ .....	P. 33
23.1 JASMAGONDA .....	P. 33
24 PAPYRUS DE CIANE .....	P. 34
25 INDOCHINE .....	P. 34
26 ISPARTA .....	P. 35
27 LIMANAKIA .....	P. 35
28 PEAU D'AMBRE .....	P. 36
29 ITABAÏA .....	P. 36
30 ALPHAORA .....	P. 37

## PIERRE GUILLAUME CRUISE

APPELEZ-MOI SEYCHELLES .....	P. 40
AQWINDIA .....	P. 40
ENTRE CIEL ET MER .....	P. 41
FLEUR DE FOUDRE .....	P. 41
JANGALA .....	P. 42
LONG COURRIER .....	P. 42
LUNE D'EAU .....	P. 43
MÉTAL HURLANT .....	P. 43
MOJITO CHYPRE .....	P. 44
PARIS FIDJI .....	P. 44
RIVAGES NOIRS .....	P. 45
SAMBAKA .....	P. 45

## PIERRE GUILLAUME BLACK COLLECTION

AMBRE CÉRULÉEN .....	P. 48
ANIMAL MONDAIN .....	P. 48
AQAYSOS .....	P. 49
AUBE PASHMINA .....	P. 49
CIEL D'AIRAIN .....	P. 50
FAREB .....	P. 50
LIQUEUR CHARNELLE .....	P. 51
MAD ABOUT YOU .....	P. 51
MANGUIER MÉTISSE .....	P. 52

MÉCANIQUE DU DÉSIR .....	P. 52
MONSIEUR .....	P. 53
MYRRHIAD .....	P. 53
NAÏVIRIS .....	P. 54
POUDRE DE RIZ .....	P. 54
SHERMINE .....	P. 55
SUCRE D'ÉBÈNE .....	P. 55
SUPERLADY .....	P. 56
VOHINA .....	P. 56

#### PIERRE GUILLAUME WHITE COLLECTION

HELIOFLORA .....	P. 60
SUNSUALITY .....	P. 61
SWIM/SX .....	P. 61

#### PIERRE GUILLAUME CONFIDENTIAL

À UNE MADONE .....	P. 64
ANTI-BLUES .....	P. 64
LA NUIT DE L'ORCHIDÉE .....	P. 65
NOIR OKOUMÉ .....	P. 65

#### PIERRE GUILLAUME CONTEMPLATION

AU ROYAUME DES FEMMES .....	P. 68
AU-DELÀ DU NOIR .....	P. 68
BAGATELLE ROMA .....	P. 69
FEMME EN SMOKING .....	P. 69
HABANERA .....	P. 70
IRIZIA PEARL .....	P. 70
LES RACINES DU MÂLE .....	P. 71
LUMIÈRE FAUVE .....	P. 71

#### PIERRE GUILLAUME BODY CARE

ISPARTA GEL .....	P. 74
LE MUSC & LA PEAU GEL .....	P. 74
LIQUEUR CHARNELLE GEL .....	P. 74
NÉROLI AD ASTRA GEL .....	P. 74
ISPARTA LOTION .....	P. 75
LE MUSC & LA PEAU LOTION .....	P. 75
LIQUEUR CHARNELLE LOTION .....	P. 75

NÉROLI AD ASTRA LOTION .....	P. 75
EAU HYGÉENNE .....	P. 76
EAU ZESTÉE .....	P. 76
PARENTHÈSE ENCHANTÉE .....	P. 77

#### PIERRE GUILLAUME L'ATMOSPHÈRE

AMSTERDAM CANDLE .....	P. 80
ARUBA CANDLE .....	P. 80
CANCÚN CANDLE .....	P. 80
HIBISCUS CANDLE .....	P. 80
LEAF CANDLE .....	P. 81
MOJITO CANDLE .....	P. 81
SAÏGON CANDLE .....	P. 81
TAÏGA CANDLE .....	P. 81
BIENVEILLANTE CANDLE .....	P. 82
FLAVESCENTE CANDLE .....	P. 82
LA ROSE D'ISPARTA CANDLE .....	P. 82
NIVEENNE CANDLE .....	P. 82
VESPERALE CANDLE .....	P. 82
FORÊT BORÉALE CANDLE .....	P. 83
ÉBÈNE CONSTELLATION CANDLE .....	P. 84
LUNE TONKA CANDLE .....	P. 84
NUIT D'ISPARTA CANDLE .....	P. 85
HIBISCUS GACHETTE .....	P. 86
LEAF GACHETTE .....	P. 86
SAÏGON GACHETTE .....	P. 86
TAÏGA GACHETTE .....	P. 86
HESPERIDREAM .....	P. 87
PILLOW POEM .....	P. 87
REBOOT THE LOO .....	P. 87

#### OUR STORES

PG CLERMONT .....	P. 88
PG PARIS .....	P. 90
OUR CORNER STORES .....	P. 91



---

*“The perfume is a wonderful self-enhancer,  
it is the artistic expression of a scientific discipline  
combining technique and poetry.”*

### **INDEPENDENT PERFUMER**

It is in Auvergne, in his own workshops, that Pierre GUILLAUME develops a contemporary and eclectic perfumery in complete creative and financial independence. ♦



### **O2 COZE : TO THE ORIGINS OF THE BRAND**

Young chemist: Pierre GUILLAUME, was only 25 years old when he tried to reproduce the smell of his father's cigar cellar. This Tobacco-Spicy accord baptized “O2 Cozé” was quickly spotted by the Critics who popularized it in the perfume blogosphere and with professional buyers around the world in the early 2000s. ♦





## INDEPENDENCE

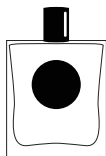
In 2010, the company PIERRE GUILLAUME DIFFUSION was created and equipped internally with a production tool including a composition studio, a cellar of raw materials and a packaging line dedicated to the manufacture of the perfumes imagined by Pierre GUILLAUME. He creates and manufactures his perfumes, in total creative freedom under the PIERRE GUILLAUME PARIS brand, which are distributed in nearly 330 points of sale in 25 countries. ♦

## TODAY AND TOMORROW

To propose a contemporary, inventive, poetic and portable perfumery. Mastering in-house design and manufacturing to guarantee quality products at realistic prices. To renew ourselves to never tire, to innovate and produce in a reasoned, clean and sustainable way. To grow through the satisfaction of the women and men who wear our fragrances and talk about them. To develop and remain faithful to our values, because reputation goes up the stairs and down the lift! ♦

***At PIERRE GUILLAUME PARIS, we only make perfume... And that's already a lot.***





## **PIERRE GUILLAUME PARIS**

### TALKATIVES PERFUMES, OLFACTORY EPICS

---

**E**ach of the fragrances in this numbered collection (formerly Parfumerie Générale) is a new stopover in a journey to the heart of the PIERRE GUILLAUME PARIS style. Using the mixture of genres, the creator spontaneously expresses his olfactory aesthetic and his personal tastes. He explores in turn different numbered olfactory themes, which follow one another in this numbered collection. Thus his tobaccos are grouped under theme 02, his orange blossoms under theme 19, his aromatic flowers under theme 09, etc. The fragrances in the collection are often described as talkative and compared to twists and turns for their evolving character on the skin, a real olfactory signature of the PIERRE GUILLAUME PARIS style.





## 02 COZÉ

**WOODY - SPICY VIBRANT**

**Indian Hemp, Spices, Blond Tobacco**

Cocoa, Patchouli, Ebony Wood

### THE INSPIRATION

The fragrance of his father's cigar box:  
Cohiba, Monterrey,  
Trinidad combined with ebony...

### THE PERFUME

Sensual tobacco fragrance,  
Spicy, Complex, Precious...

### THE NAME

A contraction of "C'est Osé" (daring) the code name that figures on the tiny label of the first scent assembled by Pierre GUILLAUME.



## 2.1 COZÉ VERDE

**WOODY - GREEN**

**Fig Tree Sap, Green Tobacco**

Lime, Liquorice Wood

### THE INSPIRATION

A radical rewriting of the original Cozé (PG02) launched 10 years ago. Leaving behind the smooth leathers and precious woods of a British gentlemen's club, the fragrance invites us to laze around on a beach in Panama...

### THE PERFUME

The tobacco leaf of the core accord goes green with the cool, vegetable freshness of lime and fig tree sap.

### THE NAME

A fresh and leafy variation  
of the classical Cozé.



## 03 CUIR VENENUM

**DRY WOODS FLORAL**

Orange Blossom Absolute, Leather, Honey

Myrrh, Styrax, Musk

### THE INSPIRATION

Following a show by fashion designer Jean-Claude Jitrois, the perfumer was seduced by the fragrance left lingering on a black model's skin by a leather sheath dress.

### THE PERFUME

A disturbing harmony that reminds us all that leather was once a living thing.

### THE NAME

Evocation of the leathery scent that penetrates into the skin like a venom.



## 3.1 ARABIAN HORSE

**CHYPRE FLORAL, ATYPICAL,  
SENSUOUS & ANIMALIC**

Wet Grass, "Horse's mane", Amber

Narcissus, Musk

### THE INSPIRATION

This unusual, figurative leather follows a horse racing through the damp countryside...

### THE PERFUME

The vegetable freshness of wet grass and wild flowers, heart notes, dominated by leather, adorned with a surprising "horse's mane" accord on a bed of animalic musks.

Subtle oriental hues to this equestrian painting...

### THE NAME

A horse racing.



## 04 MUSC MAORI

**AMBER - MUSKY**

**Chocolate Milk, Musk**

Rosewood, Jasmine

### THE INSPIRATION

Memories of childhood breakfasts, deliciously regressive.



### THE PERFUME

A bowl of bergamot-sweetened hot chocolate with amber echoes.



### THE NAME

Like a Maori tattoo with dark intertwined symbols on a clear background, *Musc Maori* unites the whiteness of musk against the darkness of cocoa bean absolute.



## 4.1 LE MUSC & LA PEAU

**WOODY AMBER - MUSKY**

**Rosemary, Milky Musk, Tonka**

Ylang-Ylang, Amber

### THE INSPIRATION

The sensuality of clean skins that mix together.



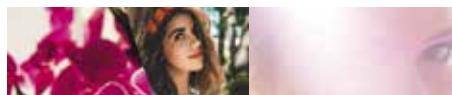
### THE PERFUME

A milk of 7 musks with skin scent, dressed with sensual balms and warm woods.



### THE NAME

A second-skin effect perfume, like a white shirt put in the morning. The journalist Sarah Bouasse wrote on this perfume: "it smell just like us but... better!"



## 05 L'EAU DE CIRCE

### MELANCHOLIC FLORAL FRUITY

Plum, Osmanthus, Sandalwood

Rose, White Peach, Honey

#### THE INSPIRATION

A perfume from the 30s, forgotten, never opened, only to be rediscovered, perfectly intact, enhanced by a Hollywood-style charm and nostalgia of red lipstick.

#### THE PERFUME

"Fruity-floral" melancholy with a hint of Hitchcockian femininity.

#### THE NAME

The legend of Circe, the enchantress, with her head of flowers and fruits, depicted by many as the femme fatale.



## 5.1 SUEDE OSMANTHE

### ALDEHYDIC FLORAL LEATHERY

Aldehyd, Black Tea Leaves, Suede

Osmanthus, Apricot

#### THE INSPIRATION

A perfume on the theme of osmanthus, absent from the olfactive pyramid, but whose fruity, floral and leathery accents are evoked by a game of olfactive chimeras.

#### THE PERFUME

A tenderly leathery floral, infused with apricot and black tea notes.

#### THE NAME

A precious Suede, a thin and delicate skin, playing with the olfactive illusion of an osmanthus, conspicuous by its absence.



## 06 L'EAU RARE MATALE

**WOODY FRESH - SMOKY**

**Bergamot, Black Tea, Woods**

Mate Absolute, Gaïac Wood

### THE INSPIRATION

The perfumer takes us on a trip to the heart of the Indian Ocean, with the world renowned Matale black tea of Sri Lanka.



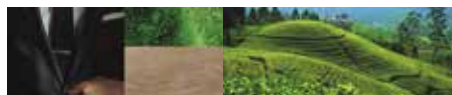
### THE PERFUME

An eau (12%) full of contrasts like an Italian Sfumato or a Flemish chiaroscuro in which the bergamot illuminates the black tea and scorched wood.



### THE NAME

From the province of Matale in Sri Lanka.



## 6.1 VETIVER MATALE

**WOODY POWDERY**

**Vetiver, Green Tea, Honey**

Cypress, Incense, Amber

### THE INSPIRATION

The perfumer offers a tender yet robust, androgynous vetiver.



### THE PERFUME

A particularly pure essence of Bourbon vetiver, warm and silky with the barest hint of smokiness, blends with green tea leaves. This woody-ambery axis, hovering between sophistication and agrestic notes, is set off by a contrasting powdery accord.



### THE NAME

The third and last instalment of the "Matale Trilogy".





## 07 SOLSEKIA

**HESPERIDIC - WOODY FLORAL MUSK**

**Mexican Orange Tree, Driftwood, Vetiver**

Citrus, Blue Agave, Pimento

### THE INSPIRATION

*SolSekia* is a private garden on the Mayan Riviera: the softness of a Mexican Orange Blossom caressed by the sea winds, the vegetal freshness of Aloe Vera enhanced by the chilli pepper leaves.



### THE NAME

SOLSEKIA / SOLSEQUIA:

from SOL ("sun") and SEQUOR ("follow"):  
which follows the sun.



## 7.1 GRAND SIÈCLE INTENSE

**HESPERIDIC - CHYPRE POWDERY**

**Citrus, Iris, Honey, Chypre**

Galbanum, Cypress

### THE INSPIRATION

For this 2021 rewriting, the classic duo Hesperides-Vetiver, expresses itself through new proportions. Free of aromatics, citrus fruits radiate, tearing with their subtle nuances, a veil of iris and honey hiding a chypre background with a contemporary roundness.



### THE NAME

Liquid French Classicism.

## 7.2 MORNING IN TIPASA

### HESPERIDIC - BALMY AROMATIC

Wild Lemongrass, Peppermint, Mediterranean Pine

Bergamot, Jujube Tree Honey

#### THE INSPIRATION

*Wedding in Tipasa* (1938) by Albert Camus is one of my favorite texts: The author vividly depicts the summer, the rites of youth in Tipasa, with its Roman ruins and the sea below, exalting nature and the beauty of bodies under the sun. "*Possession of the wave*"... the words of Camus resonate in my head as a perfumer and my mind wanders among the remains scattered between sea and mountain, listing the Algerian flora: bergamot trees, wild lemongrass, peppermint, Mediterranean pine and jujube tree in the "*sun-blackened*" countryside. Diving in the water from the rocks, one morning in Tipasa...

#### THE NAME

*Tipasa*, from the name of the Algerian coastal city, which means place of passage or stopover.





## 08 INTRIGANT PATCHOULI

**CHYPRE - ANIMALIC**

Patchouli, Mysore Sandalwood, Amber

Cinnamon, Ginger, Musk

### THE INSPIRATION

The transformation of a bohemian wood into an elegant and complex elixir inspired by the Chypres of the 40s.

### THE PERFUME

An aristocratic Patchouli, rich, sensual and talkative...

### THE NAME

Patchouli borne high by the most precious of sandalwoods.



## 8.1 L'OMBRE FAUVE

**FAUVE : WOODY ANIMALIC AMBERY**

Red Amber, Civet, Patchouli

Bergamot, Vanilla, Animalic Musk

### THE INSPIRATION

Not an Amber, nor a Chypre... but a Fauve, first Rework on the olfactive theme of patchouli.

### THE PERFUME

All the bestiality of an animalic accord swathed in dark precious woods. Hiding beneath a heavy opulent amber skin the feline elements raise their heads to distil their primitive charms.

### THE NAME

A bestial Amber, that follows like a shadow.



## 09 YUZU AB IRATO

### CITRUS FLORAL AROMATIC

Yuzu, Myrtle, Magnolia

Mint Leaves, Lemon, Thyme

#### THE INSPIRATION

The perfumer was disturbed while working on a bouquet of white flowers and dosing the citrus accord for the head note; in a fit of rage, he added a huge dose of the Yuzu japonica essential oil. Springing from a suave floral the fragrance became an aromatic floral citrus.

#### THE PERFUME

A calm, sensual freshness, somewhere between a Japanese garden and Mediterranean nature.

#### THE NAME

"Ab Irato": in a fit of rage.



## 9.1 KOMOREBI

### AROMATIC FLORAL FRUITY

Mint Leaves, Reseda, Hazel Wood

Blackberries, Mimosa, Oakwood, Tonka

#### THE INSPIRATION

The vegetal world, air and light are the three leading principles that inspired Pierre GUILLAUME for this rework of the theme 09, floral aromatic.

#### THE PERFUME

The vegetal poetry of an armful of fresh leaves and plump berries. Its scent draws us into a romantic forest, the light of the sun filtering through the leaves of oak and hazel trees on a beautiful summer day.

#### THE NAME

*Komorebi* eloquently describes the light of the sun filtered through tree leaves.



## 10 AOMASSAI

**BITTER AMBER WOODY**

Coffe, Woods, Cashmeran

Orange, Vetiver, Tolu Balm

### THE INSPIRATION

A bushfire, a Voodoo ceremony.

### THE PERFUME

Oriental Flames - Hypnotic and Disorienting. All the ingredients are taken roasted, burnt or grilled to develop a dark and mysterious aspect and reflect a notion of "olfactory bitterness".

### THE NAME

A-O-Massai for Amer (Bitter) Amber, of African inspiration.



## 10.1 BOUQUET MASSAI

**FLORAL WOODY SPICY**

Bergamot, Spicy Flowers, Coffee, Cashmeran

Spices, Peony, Magnolia, Karo-Karoundé

### THE INSPIRATION

A flamboyant rework of Aomassai.

### THE PERFUME

The bushfire of Aomassai gets brighter and solar with a bouquet of Peony, Magnolia and Karo-karounde. Tolu balm, cashmere wood and sandalwood create a velvety basenote.

### THE NAME

Between a floral ritual and burning woods.





## 11 HARMATAN NOIR

**SPICY AROMATIC - HERBACEOUS AMBERY**

**Mint Tea, Pimento, Cedar**

Jasmine, Sage, Powdery

### THE INSPIRATION

A warm and refreshing herbaceous salt.



### THE PERFUME

An accord of jasmine and cedar as though transfixed by this much feared wind.



### THE NAME

Harmatan, a strong and warm Sub-Saharan wind.



## 11.1 INDIAN WOOD

**SPICY AROMATIC - WOODY**

**Pepper Mint, Nutmeg, Woods**

Lemon, Cardamom, Coconut, Sandalwood

### THE INSPIRATION

A new "spicy aromatic", theme 11, sets in the land of the Maharadjahs.



### THE PERFUME

Peppermint, nutmeg and cardamom fit in a hot and cold contrast evoking the moisture of the rainy season, pierced by the carnal vibration of a hint of coconut milk. Sandalwood, Vetiver and Moss compose a captivating woody trail.



### THE NAME

Indian Wood guides us into the heart of an indian forest.



## 11.2 SPICEMATIC

### SPICY AROMATIC - WOODY INCENSE

Spearmint, Saffron, Ginger, Frankincense, Siberian Pine

Red Cedar, Musk

#### THE INSPIRATION

Marble water, inspired by a molecular distillation of incense.



#### THE PERFUME

Driven by the spicy-aromatic vibe of saffron, fresh ginger and green mint, this “marble water” has the shine and hardness of rock. Its mineral and cold character, emanating from a molecular distillation of incense, intense, fusing and precise is tempered by the organic vibration of Red Cedar and the resinous heat of Siberian pine



#### THE NAME

From the contraction of “Spicy” & “Aromatic”.





## 12 HYPERESSENCE MATALE

**HESPERIDIC - AROMATIC WOODY LEATHERY**

**Bergamot, Matalé Black Tea, Leather**

Mint Leaves, Gaiacwood, Birchtree

### THE INSPIRATION

The perfumer takes us on a trip to the heart of the Indian Ocean, with the world renowned Matalé black tea of Sri Lanka.



### THE PERFUME

Brought to a level of concentration of 30%, this Hyperessence only shares 8 compounds with the *Eau Rare*. The smoky wood hint stands out to enhance the chypre leather note.



### THE NAME

From the province of Matalé in Sri Lanka.



## 12.1 UN CRIME EXOTIQUE

**SPICY AMBERY BLACK TEA**

**Elemi, Black Tea, Gingerbread**

Cocoa, Benzoin, Amber

### THE INSPIRATION

Pierre GUILLAUME first explored the theme of chypre tea in 2005, with *"Hyperessence Matalé"*, texturing it with citrus and leather accents. Twelve years later, he reworked this theme with *"Un Crime Exotique"* 12.1 where the chypre structure is adorned with spicy and gourmet notes.



### THE PERFUME

*"Un Crime Exotique"* 12.1 plays with the unusual union of Elemi resin and Gingerbread, in the heart of a truculente farandole of flavors, mixing tea steamers, Ceylon cinnamon and star anise. Mate Absolute and cocoa powder tint the Oceanian Sandalwood of a quaint exoticism ...



### THE NAME

Sin of gluttony in the land of rising sun...



## 13 BRÛLURE DE ROSE

### AMBERY ROSE

Litchi, Rose, Amber

Raspberry, Rosewood, Sandalwood

#### THE INSPIRATION

A molten metallic version of an Ambery Rose.



#### THE PERFUME

A metallic rose, burning on the ambery base note.



#### THE NAME

A burning Rose, for all those who are adverse to Roses..



## 13.1 LA NYMPHE & LE POETE

### FLORAL - FRESH SENSUAL

Rose-Tea, Orangewood, Cistus

Citrus, Peach

#### THE INSPIRATION

Romanticism, Romantic Poetry of the 19<sup>th</sup> century. Nourishing their imagination, opposing feeling to reason, it becomes a cultural movement seeking through exoticism, mythology, irrationality, melancholy, and passions a means of escape and delight.



#### THE PERFUME

A Rose-Tea with accents of violet and spices.

The singularity of an original material: the absolute of tea rose leaves whose complex greenness responds to the amber warmth of the branches of Cistus.



#### THE NAME

An imaginary idyll between the nymph Erato and the German poet Novalis.



## 14 IRIS ORIENTAL

**ORRIS - WOODY BALSAMIC**

Jinkho Wood, Fig Tree Honey, Iris

Bergamot, Patchouli, Gaïac wood

### THE INSPIRATION

An Orris Honey, Baroque and Radiant.

### THE PERFUME

An Iris dressed in a sunny Baroque costume: an intriguing Oriental dressed where the animalic Jinkoh wood combines with the richness of Iris absolute and the mellowness of Fig Honey.

### THE NAME

An Orris Honey...



## 14.1 CUIR D'IRIS

**WOODY SPICY**

Cardamom, Iris Old Black, Leather

Bergamot, Patchouli, Cedar

### THE INSPIRATION

"Iris dust" and leather.

### THE PERFUME

An old Purebred powdered leather through sumptuous Old Black Iris with notes of grape and dark chocolate. This "iris dust" and leather, rising in an amber vapor has become a classic of the leather family since its creation in 2007, demonstrating the unique "Savoir-Faire" of Maison PIERRE GUILLAUME PARIS.

### THE NAME

The leathery facets of a black iris...



## 15 ILANG IVOHIBÉ

**FLORAL EXOTIC - WOODY POWDERY**

Lavander, Vanilla, Ylang-Ylang

Orange, Patchouli

### THE INSPIRATION

An exotic, different, powdery perfume.



### THE PERFUME

An floral exotic designed around an imaginary flower that would have blossomed on an island on the other side of the world.



### THE NAME

A flower from the Comoros Islands...



## 15.1 HAPYANG

**FLORAL ALDEHYDIC EXOTIC**

Cloud of Powder & Aldehydes, Magnolia, Ylang-Ylang

Bergamot, Pearwood, Benzoin, Vanilla

### THE INSPIRATION

It was while discovering by chance a series of photographs depicting a dancer in a cloud of powder (by Jeffrey Vanhoutte) that the idea came to me: aldehydes should twirl in a huge cloud of powder!



### THE PERFUME

*Hapyang* is an explosion of powder and floral sparkles, with an endless trail... Aldehydes make magnolia and ylang-ylang flowers sparkle in a cloud of powder, enlivened by the sweet, exotic notes of this floral heart. Pearwood, benzoin and vanilla rise in a delicate oriental breath, enveloping the skin like a precious veil of shimmering silk.



### THE NAME

HAPPY+YLANG.



## 16 JARDINS DE KERYLOS

**GREEN WOODY - FRUITY**

**Green fig, Sycamore Tree**

White Peach, Tuberose

### THE INSPIRATION

A natural and luminous aesthetic.



### THE PERFUME

The minimalist elegance of a blend of Fresh Figs and Sycamore Wood borne on the grassy freshness of a shaded garden.



### THE NAME

From the Kerylos villa and gardens in Beaulieu-sur-Mer, born from a collaboration between the archaeologist Théodore Reinach and the architect Emmanuel Pontremoli.



## 16.1 BOIS NAUFRAGÉ

**WOODY FOUGERE**

**Salt Flower, Figtree**

Mint, Vetiver, Driftwood

### THE INSPIRATION

Lucien Clergue's photograph "Nu au bois flotté" (Naked in Driftwood).



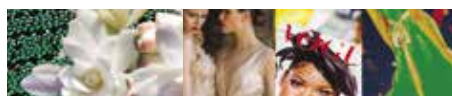
### THE PERFUME

A woody fougere in which the Egyptian Figtree is dressed with the minerality of Salt Cristals and Ambergris, on a fractioned Vetiver base.



### THE NAME

An Egyptian Figtree treated like Driftwood.



## 17 TUBÉREUSE COUTURE

### FLORAL

Kalamanzi, Tuberose, Sugar

Citrus, Neroli, Benzoin

#### THE INSPIRATION

Bright, incisive and luxurious, *Tubéreuse Couture* exacerbates the flower's five natural facets through five complex accords: green, camphorated, solar, animalic and lactonic.



#### THE PERFUME

A heady radiant floral nectar.



#### THE NAME

The Tuberose, alongside the Gardenia, is without a doubt the most "*Couture*" of flowers with its natural complexity that makes it a source of unlimited inspiration for any perfumer.



## 18 CADJMÉRÉ

### WOODY AMBERY - CREAMY

Rosewood, Sandalwood, Vanilla

Tanjerine, Cypress, Ambrette Seed

#### THE INSPIRATION

Sandalwood, a creamy harmony, caressing and comforting like kashmir.



#### THE PERFUME

Pierre GUILLAUME Sandalwood with an oriental amour, textured and shaped to evoke the caressing and delicate qualities of kashmir.



#### THE NAME

*Cadjméré* comes from "*Cachemire*" and "*Mère*" (mother in french): the principal element of the fragrance, sandalwood, is often qualified as "*maternal wood*" for its creamy, warm and comforting nature.



## 19 LOUANGES PROFANES

**FLORAL AMBER - BALMY**

**Neroli, Incense, Benzoin**

White Lily, Patchouli, Gaiac Wood

### THE INSPIRATION

*"A night of love with an angel..."*



### THE PERFUME

An immaculate, luminous and sensual Floral Amber built on an accord of tunisian neroli and benzoin.



### THE NAME

A sensual olfactory prayer written in ink of six religious symbolisms. In the Renaissance "*profane praise*" meant the cry of female orgasm.



## 19.1 NEROLI AD ASTRA

**FLORAL VEGETAL FRESH**

**Neroli, Agave flower, Pear**

Tangerine, Jasmine, Geranium, Musk

### THE INSPIRATION

Nine year after the creation of *Louanges profanes 19*, Pierre GUILLAUME reworks the theme of orange blossom, in a new fresh and musky interpretation.



### THE PERFUME

Lifting and precise, *Neroli ad astra 19.1* is a white floral, luminous and aerial, in which the Neroli from Morocco and the Agave Flower from Mexico seem to have been harvested in the azure fields of an heavenly garden.



### THE NAME

*Ad astra* (latin expression): to the stars...



## 20 L'EAU GUERRIÈRE

**WOODY FRESH**

Cinchona Bark, Incense, Aloe Wood

Gin, Cedar

### THE INSPIRATION

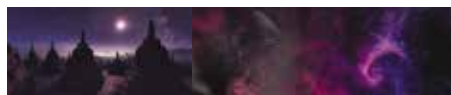
The smoke of burning Incense,  
Laurel branches and Resins  
during the ancient Oracle ritual.

### THE PERFUME

Green, fresh incense, an eau infused  
with dry wood.

### THE NAME

A woody, modern and raw fragrance...  
created from the duality of citrus oils and truly  
primitive notes.



## 20.1 SORONG

**WOODY SPICY AMBER**

Citrus, Kyara Wood, Amber

Blackcurrant, Saffron, Orris, Incense

### THE INSPIRATION

On the road of incense with as a starting point an  
extraordinary material, inspired by the fumes of  
combustion of the chips of oud from Indonesia: the Kyara  
Wood. At the same time mineral and burning its perfume  
is an "animalized smoke" and to accord it to the resin of  
incense appeared to me an obviousness.

### THE PERFUME

Benzoin, Ciste, Elemi, Fenugreek, Cypress, Gaiac,  
Iris, Labdanum, Patchouli, Tonka Bean, Ginger and  
Nagarmotha, 12 natural raw materials were the tools of  
this union. To set in motion and give an olfactory trail  
to the "cocoon" woody-amber and spicy thus created,  
it took the power of a propellant made of citrus, saffron  
and blackcurrant. Sorong is both vibrant and monolithic.  
If he seems to possess the power and brilliance of a laser,  
he paradoxically gives the wearer the feeling of being  
protected by an aura, an invisible and protective force.  
Sorong is a talisman, his sillage an olfactory cuirass.

### THE NAME

Sorong: a port city of Indonesia



## 21 FELANILLA

### SPICY AMBER

Saffron, Vanilla Absolute, Iris Absolute

Cardamom, Amber, Musk

#### THE INSPIRATION

Vanilla for grown-ups: neither girly nor for eating. Precious, generous, racy. Three absolutes in a softly spiced ambery nectar, carried by fruity wood and burning amber.



#### THE PERFUME

A Feline Vanilla with Iris and Saffron.



#### THE NAME

From the contraction of “Feline” and “Vanilla”.



## 22 DJHENNÉ

### AROMATIC WOODY

Lavander, Seringa, Myrrh

Mint, Cocoa Beans, Fig Leaves, Leather

#### THE INSPIRATION

The scorching sun and the olfactive experience of fern offering an alliance of fresh aromatic notes wrapped in a warming sheath of lightleather.



#### THE PERFUME

A Wheat and Myrrh light Leather sheath, protecting the delicate Mint leaves and intoxicating whiteness of the Seringats from the shroud of burning sand...



#### THE NAME

Djhenné, a city in the sand, warm shades.



## 23 DRAMA NUUI

### FLORAL JASMINE

Absinth, Jasmine Tea, Musk

Gaiac Wood, Mate Absolute, Styrax

#### THE INSPIRATION

A virginal jasmin, pure,  
free of any animalic facets.



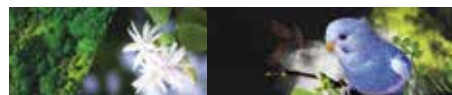
#### THE PERFUME

A bitter jasmnade with a fusion  
of absinthe highlights.



#### THE NAME

Named after the heroine  
of a Polynesian legend...



## 23.1 JASMAGONDA

### WOODY POWDERY JASMINE

Green Notes, Indian Jasmine, Himalayan Cedar

Vetiver, Tonka

#### THE INSPIRATION

With *Jasmagonda*, I wanted to change my  
point of view... and of olfaction. Flying over the  
canopylike a bird, brushing over nature  
to capture its essence.



#### THE PERFUME

A jasmine wood...seen from the sky.  
*Jasmagonda*: the story of a verdant,  
variegated India seen from the sky,  
through a silky, powdery woody floral elixir  
blending Indian jasmine, Himalayan cedar  
wood and Tonka bean.



#### THE NAME

The contraction of Jasmin  
and the beaches of Agonda.



## 24 PAPYRUS DE CIANE

### CHYPRE GREEN

Broom, Galbanum, Mousse de Saxe

Neroli Powdery, White Musk

#### THE INSPIRATION

*"Papyrus... From the Arethuse fountains meandering dark waters of the Ciane, the elegant sway of intense green plumes..."*



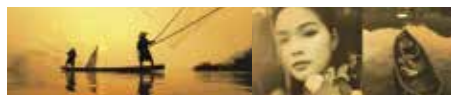
#### THE PERFUME

Chypre, Green, Complex, Sombre and Sparkling at the same time.



#### THE NAME

From Italy's river Ciane, the world's largest nature reserve of Papyrus.



## 25 INDOCHINE

### SOFT SPICY

Kampot Pepper, Tanakha, Benzoin

Cardamom, Honey, Incense, Amber

#### THE INSPIRATION

*"1920: a sepia-toned cruise down the mighty Mekong river, a kaleidoscope of ephemeral dawns shrouded in mist and glorious days of radiant sunshine. Slow down, appreciate the dampness and close your eyes. Beyond the riverbanks lie our dreams of Indochina..."*



#### THE PERFUME

A luminous, smooth and airy orchestration that nely reproduces each and every facet of unprocessed balsam.

Wood, Fresh Spice, Sweet Amber.



#### THE NAME

A sepia-toned cruise down the mighty Mekong River.



## 26 ISPARTA

### NEO CHYPRE

Red Fruits, Isparta Rose, Patchouli

Calamus, Ambroxan

#### THE INSPIRATION

*"The province of Isparta in Turkey is famed for its rose oil, obtained from a variety called 'Isparta Summer Roses', which grows profusely in gardens and terraced fields on the soft mountain slopes. The roses are picked early in the morning when they are half-open and their fragrance is the strongest... intense, rich, slightly spicy."*

#### THE PERFUME

Behind wisps of burning resins, Isparta hides a woody rose embraced by a velvety animalic accord of red fruit, benzoin, calamus and ambroxan...

#### THE NAME

Isparta Summer Roses.



## 27 LIMANAKIA

### MINERAL & ANIMALIC

Rocky Beach Accord, Salty Patchouli, Labdanum

White Flower, Helichrysum

#### THE INSPIRATION

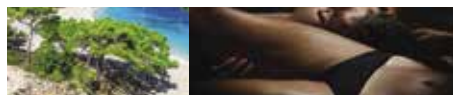
Pierre GUILLAUME wanted to evoke the animality of skins rubbing against each other and the scent of rock rose bushes, by blending Pierre GUILLAUME it with the mineral smell of sea breezes caressing burning rock.

#### THE PERFUME

A salty patchouli tinged with the vegetal animality of Labdanum Ambrain.

#### THE NAME

On the coast of the Aegean Sea, a series of burning, rocky beaches and mineral alcoves edged in rock rose bushes - the perfect place for trysts... *Limanakia*.



## 28 PEAU D'AMBRE

### MEDITERRANEAN AMBER

**Resins, Amber, Leather**

Incense, Fir Balsam, Opopanax, Benzoin

#### THE INSPIRATION

Imagine for a moment to observe, of the Gulf of Corinth, from the pine forest or the maquis at sunset, the ballet of boats laden with vases of perfumed oils and odorous gums, their leather bottles struggling to contain the scent of resins and balms of ancient potions.

#### THE PERFUME

Mediterranean Amber. Frankincense, Fir balsam, Opopanax and Benzoin form the resinous quadriga leading amber and leather to the mineral banks of a Mediterranean twilight.

#### THE NAME

A skin-deep amber.



## 29 ITABAÏA

### HESPERIDIC WARMNESS

**Citrus, Maracuja, Jurema Flower, Hibiscus Wood**

Pineapple Leaves, Vanilla, Hemp

#### THE INSPIRATION

For this new Opus, inaugurating the theme 29 "Hesperimental" Pierre GUILLAUME was inspired by the strength and energy associated with Capoeira, this Afro-Brazilian art combining dance and wrestling. On the Brazilian beach of Itacaré, dance warriors perform an acrobatic and solar ballet to the rhythm of berimbau and feverish songs, dazzling the spectator with power, grace and harmony.

#### THE PERFUME

Compose an original citrus fragrance, which without being an Eau de Cologne would retain its accuracy, versatility and immediate desire to be worn. Keep an invigorating top note, around citrus fruits and herbs. Unfold an elegant, unisex floral heart and place the whole on a musky base giving it a trail and persistence.

#### THE NAME

Invented by the perfumer, of an undetermined kind. An elegant and mysterious word, it impresses with exotic sounds evoking Brazil, dance, a divinity...

# 30 ALPHAORA

## MOSSY FLORAL - AMBERY

Blood Orange, Albizia Blossom, Hinoki Sap, Assam Moss

Amber, Musk

### THE INSPIRATION

*"An imaginary tree moss as complex as it is deep, revealing an amber warmth between sage, dried fruit and blond tobacco. The sweet sap of Hinoki Wood, the strange floral vapor of an albizia under the sun crowned by the brightness of the blood orange".*

### THE PERFUME

The structure of *Alphaora* is modelled on the architecture of *Sucre d'èbène* (2010): a floral heart dominated by an overdose of Hedione confers diffusion and volume to a woody-sweet, refreshed with citrus and gently spicy notes. While *Sucre d'èbène* rests on a massive base of musk infused with balsamic notes, *Alphaora* blossoms in a vapor of ambregris, acting like a magnifying glass on an imaginary tree moss accord with hints of dried fruit and blond tobacco.

### THE NAME

A portmanteau word, invented, in the purest PG style. First work (*alpha*) on the theme "Glam'moss", the quest for a perfumeaura (*ora*), tenacious and ultra diffusing, where the Mousse of Assam matches the blood orange (*ora*).







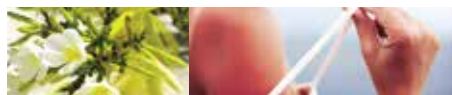
## **PIERRE GUILLAUME CRUISE**

### A TASTE FOR TRAVEL

---

**T**hrough the theme of travel, these creations evoke the wide open spaces, wild nature and elsewhere far away. The Cruise Collection is not a catalog of iodized odors... It is about sea, distant islands, jungle but especially of movement... The bottle “*cruises*”, takes the lines of the bottle emblem of the House with a double translucent blue ceramic skin injected inside the glass.





## APPELEZ-MOI SEYCHELLES

### WHITE FLORAL

Ginger, Lily, Frangipani

Galbanum, White Pepper, Musk

### SOLAR FLOWERS AND WARM SAND, LEFT BANK STYLE

In this white floral blending exoticism with the allure and distinction of Saint-Germain-des-Prés, the perfumer bridges two olfactory universes... Returning to the Left Bank a holiday by the Indian Ocean, a chic Parisienne carries back the essence of a tropical beach on her skin. Ocean, her skin suffused with the essence of a tropical beach.



## AQWINDIA

### FRESH WOODY - POWDERY

Green Tea, Mint, Iris, Tonka

Pink Pepper, Liquorice

### A REFRESHING COMPOSITION

Composed of Aqua (water), Wind (Wind), Dia (day), this "name-patchwork" invented announces a refreshing composition like water, as powerful as the wind and luminous as the day. It is on the edge of the lake of Auvergne where he resides, that PIERRE GUILLAUME drew the inspiration of this new opus: an abundance of fresh mint leaves wrestling with the yellow iris of the marshes in the icy exhalation of the blowing wind mountains... Finally, a fresh and powdery fragrance, a semi-oriental oscillating between green tea leaves and tonka bean.





## ENTRE CIEL ET MER

### WOODY FRESH

**Sandalwood and Aquatic Notes**

Algae Absolute, Lavender, White Thyme

#### A MARINE POEM COMPOSED WAVE AFTER WAVE...

*Entre ciel et mer* ("Between sky and sea") tells a story of etesian winds, azure skies and flying over seascapes at top speed... Icy, soaring and powerful, the first whiff feels as though it had been sculpted out of the Meltem - the north wind that blows over the Aegean Sea, with notes of crumpled, water-splashed leaves and the fruity-aromatic nuances of a lavender, pear and white thyme accord.



## FLEUR DE FOUORE

### FLORAL WOODY

**Champaca Flower and Vetiver**

Bergamot, Red Fruits, Black Tea

#### THE FRAGRANCE OF THE CHAMPACA FLOWER CAPTURED JUST BEFORE A STORM ON AN ISLAND IN THE INDIAN OCEAN...

The initial idea, simple and beautiful, was to capture the particular scent champaca flowers gives off just before a storm... To achieve this effect, a very special ingredient was needed.

One that came as close as possible to the flower, a close relative of magnolia, and that could evoke the utter delicacy of its fresh, floral, slightly fruity facets.





## JANGALA

### AROMATIC WOODY

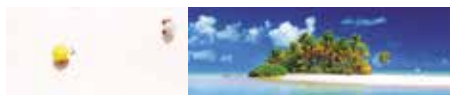
Thai Herbs, Coconut, Sandalwood

Cardamom, Rosewood, Incense

#### IN THE INDONESIAN JUNGLE...

In Sanskrit, *Jangala* designates a natural wilderness area, a jungle.

The term sums up the olfactory world imagined by Pierre GUILLAUME in this woody, aromatic composition, infused with moist jungle air.



## LONG COURRIER

### SALTY VANILLA AMBER

Cocoa Powder, Salty Vanilla, Elemi

Orange, Patchouli, Cedar

#### A SWEET-AND-SALTY WATER BROUGHT BACK FROM A BEACH ON THE OTHER SIDE OF THE WORLD

With *Long Courier*, ("Long-distance flight"), a solar amber built around a core of salty vanilla, the perfumer evokes faraway destinations, beaches on the other side of the world, lazy days gorged with sea spray and the delicious scent of suntan lotion...





## LUNE D'EAU

### ICY WOODY INFUSION

Mineral Accord, Icy water, Amyris

Ginger, Juniper, Musk

#### ICY INFUSION OF AMYRIS WOOD

"Lune d'eau" is a woody fern.

His name refers to the reflection of the early morning winter moon in the lake near which the perfumer resides.



## MÉTAL HURLANT

### WOODY MUSK

Musk, Leather & Gazoline

Jasmine, Sage, Amber

#### MUSK, LEATHER AND GASOLINE

A motorcycle trip across the USA on the legendary Route 66.

With *Métal Hurlant* ("Howling Metal"), ride a Harley at full throttle on an asphalt ribbon.





## MOJITO CHYPRE

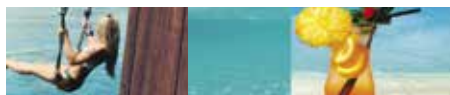
### CHYPRE AROMATIC

Mojito Strawberry, Patchouli, Vanilla

Mint, Lemon, Vetiver, Labdanum, Moss

#### A BEACH PARTY... FROM IBIZA TO MIAMI

Pierre GUILLAUME revisits a historical fragrance family by boldly redrawing its outlines to offer a modern, hybrid composition.



## PARIS FIDJI

### GOURMAND FRESHNESS

Citrus, Rhum, Sandalwood

Orange, Grapefruit, Patchouli

#### NEW ARCHIPELAGO, NEW STOPEVER

Savoury stopover in the Fidji archipelago...

A woody and savoury eau, in which the Sandalwood from Fidji and the dark Rum meet the tasty freshness of an Orange and Grapefruit juice.





## RIVAGES NOIRS

### SPICY AROMATIC

Spices, Whisky, Cypress

Citrus, Ozonic Notes, Cedar

### A MEDITERRANEAN CYPRESS, THE SEA, THE NIGHT

With “*Black Shores*”, a spicy-woody composition, Pierre GUILLAUME invites us to sip single malt whisky on the deck of a boat anchored somewhere off the Mediterranean coastline, rocked by the waves of a quiet summer night.



## SAMBAKA

### WOODY WARM

Coffee Santos, Orange, Coffee Wood

Cardamom, Sandalwood

### A RHYTHMIC SCENT OF BRAZIL

Composed of the sounds of the words Samba and Café, this invented name, directly announces the theme of work of this new stopover: Brazil. *Sambaka* is an Oriental Woody based on a CO<sub>2</sub> extract of “Café Santos” from Brazil. Super realistic this material offering all the balsamic nuances of a freshly roasted coffee explodes in the lead bringing in its wake the spicy scents of cardamom and green ginger. The Orange Pera from Brazil brings its greedy freshness to a softly animalic Coffeewood accord.







## PIERRE GUILLAUME BLACK COLLECTION

### OLFACTORY PHOTOGRAPHS

---

A collection of eaux de parfums with architecture evoking figurative olfactory captures. The composition of these scented photographs is built around innovative ingredients, derived from bio-technologies. The bottle “*shadow*”, takes the lines of the bottle emblem of the House with a double black ceramic skin injected inside the glass.





## AMBRE CÉRULÉEN

### AMBER

Opoponax, Tonka Beans and Sandalwood

Bergamot, Patchouli, Vanilla

#### AN AMBER TINTED WITH AZURE...

A powdery balm for an airy amber ... Opoponax, Tonka beans and Sandalwood delicately lit up by the precious essence of Moroccan Organic Verbena, orris and cinnamon.



## ANIMAL MONDAIN

### WOODY POWDERY ANIMALIC

Pear Tree Leaves, Turkish Tobacco, Mahogany Wood

Musk, Amber

#### THE 30'S AND MODERNISM, FROM MARLENE DIETRICH TO ROBERT MALLET-STEVENS

*"Between the spicy ardor of Cozé and the balmy and liquorish opulence of Liqueur Charnelle, Animal Mondain interposes itself as a new Tobacco in my production. Stripped of all artifice, it is a gender free olfactory creation inspired by the modernist architecture of a Mallet-Stevens smoking room. The bursts of laughter of a social society happy to feast there splits the tobacco volutes that stretch gently on the leather armchairs and along the pear tree and mahogany woodwork..."*

Pierre GUILLAUME





## AQAYSOS

### WOODY SPICY FRUITY

Coriander, Sansho Berries, Cocoa Beans

Musk, Woods, Amber

#### A CRYSTAL WOOD...

*Aqaysos* is a versatile and elusive olfactory proposal, inspired by the incisive, shiny and brilliant character of crystal.

Pierre GUILLAUME plays resonances between the ingredients, to distort our perception as a prism diffracts the light...

Between fluidity, transparency and sensorial impact, *Aqaysos* is an explosion of rising and fruity notes, on the rhythmic pulsations of a woody vibration.



## AUBE PASHMINA

### FRUITY GREEN

Blackcurrant Leaves, Tomato Leaves, Satinwood

Basil, Rosemary, Citrus, Woods

#### A VEGETABLE GARDEN AFTER THE MORNING DEW...

Sunrise in a dew-covered garden: basil, rosemary, tomato leaves, geranium and fresh blackcurrant extracts mark the rhythm in the delicate "jasmine-orange" vibrations of Satinwood.





## CIEL D'AIRAIN

### WOODY FRUITY

Pear Tree, Olive Tree, Ambergis

Cedarwood, Musk

#### JUICY PEAR AND WOODY HEAT...

Forgotten orchard on the banks of Lake Como under a brooding brown sky before the storm ...

Natural extracts expressing fresh fruit, pear tree leaf and bark accompanied by olive twigs and ambergis.



## FAREB

### SPICY LEATHERY

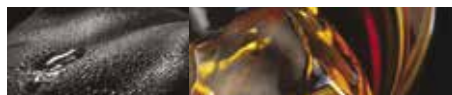
Ginseng, Helichrysum, Leather

Spices, Rosemary, Warm Sand

#### FRESH, AROMATIC, RESINOUS, SPICY AND WOODY

A primitive perfume, a taut note drawing on raw materials in their pure, natural state. The double accent of "*Bois d'Immortelle*" with hints of leather, spices and warm sand, and Ginseng absolute for an unusually impassioned, sombre and strong base.





## LIQUEUR CHARNELLE

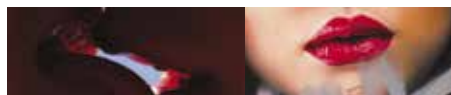
### WOODY SPICY

Spices, Cognac Accord, Blond tobacco

Raspberries, Gaïac Wood, Powdery woods

#### A VOLUPTUOUS COGNAC BOUQUET...

Inspired by this cornucopia of fragrances, *Liqueur Charnelle* is a voluptuous, deeply sensual accord in which the perfumer offers a "cognac bouquet" of spices, blond tobacco and powdery woods. Suave and vibrant pink pepper, elemi and black pepper enhance tonka bean and raspberry notes...



## MAD ABOUT YOU

### POWDERY WOODY GOURMAND

Griotte, Liquorice, Bois de violette

Orris, Patchouli, Black Tea

#### NEO ROMANTICISM...

Composed in 2017 for the exhibition "The Kiss" Gallery Christiane Valley, in resonance with the works of Anthony SQUIZZATO and the news of Cécile COULON. Pierre GUILLAUME presented us a Woody Gourmand Floral fragrance crystallizing not without humor and distance the concept of Neo-Romanticism at the time of the social networks.

After a burst of regressive gourmet chords and powdery floral notes, *Mad About You* develops a signed and catchy trail, fueled by the "leather-powdery" sophistication of a unique duet of Bois de Violette and Black Tea Absolute.





## MANGUIER MÉTISSE

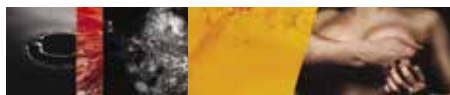
**FLORAL MUSK SILKY**

**Mango Bark and Frangipani Flower, Black Tea**

Rose, Patchouli, Musk

### A SKIN CARESSING EXOTISM...

A woody metaphor, a mild yet penetrating floral with a hint of fresh Mango extract... The double accent of Mango bark extract, powdery, aromatic and fruity, and a few leaves of black tea, warmed by the exotic sweetness of Frangipani flowers.



## MÉCANIQUE DU DÉSIR

**WOODY FLORAL MUSK**

**Mandarin, Gaïac Wood, Amber**

Orangewood, Violette leather

### LUXURY GREASE FOR SENSUAL MACHINES

As a classic car collector, my father taught me the beauty of vintage engines as a teenager, while I watched him restore his Austin Healeys, Jaguars and Mercedes.

We spent long winter Sundays in his shop, sinking our hands into the entrails of his sculptures on wheels. The smell of dirty engine grease has always both attracted and repelled me. Though it was associated with happy moments in my life, this "engine sweat", with its pungent smells of tar, petrol and oil, was also disturbing. Many years later, as I was reading Jacques Lacarrière's book *Ce bel et vivace aujourd'hui*, I finally understood the hidden poetry of this "Black Mucus" and decided use it as a theme for my work. My "cambouis" (dirty engine grease) will have the warmth of amber and animalic musks, tinged with the strange blackness of a guaiac wood and violet leaf accord. The sulfurous notes of cassis bud mixed with aldehydes will trace metallic outlines, while mandarin essential oil will add the gleam of chrome.

Pierre GUILLAUME





## MONSIEUR

### WOODY

Patchouli, Cedar, Vetiver, Sandalwood, Poplar, Oakmoss

Incense Wood, Papyrus, Amber

#### THE ULTRAWOODY...

It is in the heart of “Bois Noirs”, where torrents and waterfalls from Auvergne’s mountains carry along scents of moss, bark, wood, earth, humus and stone, that the composer drew inspiration for this perfume.

A harmonious blend of eight woody notes entwined with crushed leaves splashed by the mineral freshness of water spurting out of the rock, “Monsieur” is a rich, powerful fragrance that is both complex and vibrant with an extremely organic sensuality.

Essences of Patchouli, Cedarwood, Vetiver and Sandalwood, Absolute of Poplar, Oakmoss, Incense Wood and Papyrus.



## MYRRHIAD

### AMBER

Myrrh, Black Tea, Vanilla

Bergamot, Liquorice, Opopanax

#### A MILLENNIAL STORY...

The story of myrrh is as old as that of Perfume.

The Egyptians have known about it for four millenia and used it as one of the components of Kyphi, the sacred incense of their Kings.

Warm and sensual with notes of amber and balsam, *Myrrhiad* is an oriental perfume that celebrates all the facets of this ancestral resin, enhanced in this fragrance by the leathery, animal dimension of Black Tea Absolute interlaced with a cocktail of different vanillas and liquorice.





## NAÏVIRIS

### POWDERY SPICY LEATHERY

African Red orris and Zebrano Wood, Sandalwood

Rosewood, Cedar, Rose

#### A PASSIONATE WOOD, FATALLY RED...

A lover's tryst between African Red Orris (Kigelia Africana), with its spicy powdery aroma, and the warm throbbing essence of Zebrano wood.



## POUDRE DE RIZ

### AMBERY POWDERY

"Poudre de Riz", Monoï and Vanilla Pods

Cinnamon, Rose, Amber, Musk

#### AN AMBERY EMBRACE...

*"The air in the closed room was heavy with a mixture of odours: soap, face powder, the pungent scent of cologne".*

Henri Barbusse, The Inferno, 1908 T

This is the phrase from a novel by Henri Barbusse that inspired "Poudre de Riz", a fragrance for a deliciously amber embrace: the old-fashioned charm of an accord of "Poudre de Riz" tinged with Rose Petals and the timeless sensuality of a Monoï infused with Vanilla Pods.





## SHERMINE

### FRESH POWDERY

Citrus, Orris, Guaiac Wood

Lavender, Cardamom

#### IRIS LIKE FUR...

Woody and powdery, but also warm and floral, iris is transformed by a clever spicy-aromatic accord of cardamom, rosewood and lavender. It becomes as hazy, immaculate and caressing as white fur.

Pepper and the zest of Argentinean lemon give it verticality, pulling the precious material into the top notes and making it sparkle.

Vanilla and musks add their creaminess to an extremely elegant woody base of vetiver, patchouli and guaiac wood.



## SUCRE D'ÉBÈNE

### FLORAL MUSK - SUAVE WOODY

Brown Sugar, Witch Hazel and Benzoin

Bergamot, Vanilla, Cedar

#### A MAT AND SWEET WOOD...

The gentle caress of sweet trade winds...

Musky infusion of brown sugar, witch hazel, orange blossom, vanilla and benzoin.





## SUPERLADY

### LIVELY GREEN FLORAL

Magnolia, Apple candy, White Amber

Rose, Jasmine, Vanille, Musk

#### A VIBRANT ELIXIR FOR EVERY SUPERLADY...

*"A vibrant floral, Superlady is a magic potion for the wonder women of everyday life."*

Pierre GUILLAUME

*Superlady*, a lively, delectable green floral blending magnolia and candy apple with the long-lasting radiance of a super-powerful white amber. an energy shot in the heart of winter...

A crunchy, tasty candy apple is revealed in the heart notes, balanced by the fruit's tart freshness. Tasty but not sugary, *Superlady's* green, fruity, gourmand accord stays crisp and lively.



## VOHINA

### FRESH FLORAL AMBER

Peach Tree Blossoms, Lavender Honey, Blond Hay

Grapevine Flower, Rosemary, Musk

#### A FLORAL VELVET...

A sunny afternoon in the fields, velvety and floral with peach tree blossom and lavender honey resting on golden hay.





AU ROYAUME  
DES FEMMES

PIERRE GUILLAUME  
PARIS





## PIERRE GUILLAUME WHITE COLLECTION

### HELIO-INSPIRED FRAGRANCES

---

**A** collection of eaux de parfums inspired by the light, the sun and well-being. The bottle “*Shadow*”, takes the lines of the bottle emblem of the House with a double white ceramic skin injected inside the glass.





# HELIOFLORA

## WOODY AROMATIC FRUITY

Rhubarb, Buddleia, Red Sandalwood

Apricot, Rosemary, Musk

### A FRUIT & HERB SORBET

Granita, called “*granité*” in French, also called “*granita siciliana*” in Italian, is a refreshing semi-frozen dish typical of Sicily. It comes in an intermediate consistency between that of a sherbet and crushed ice. Its current manufacture involves the partial freezing of a constantly stirred mixture of water, ice and fruit or other tasty ingredient... *Helioflora* is a woody floral built like a “*granita*” of flowers, fruits, wood and herbs.

A sorbet of rhubarb, apricot and basil brings a particular flavor to the floral scent of Buddleia (Butterfly Tree) and the soft woody heat of Red Sandalwood.





## SUNSUALITY

### A SILK OF CITRUS

Kumquat, Ginger, Creamy Sandalwood

Pink Pepper, Amber

### A SILK OF CITRUS

A particularly silky fragrance, where Pierre GUILLAUME transformed the citrus acidity into a scented caress.

The Kumquat-Santal accord seems infused with sunlight and develops on the skin the charms of a melting cream, soft and fresh.



## SWIM/SX

### SENSUAL AQUATIC

Rosewood, Indian Hemp, Okoume, Musk

Ylang-Ylang, Amber

### AQUATIC & SENSUAL...

It kept his code name that sums it up so well.

SWIM/SX (for SPORT SEXY) evokes a sensual after-sun that tells us about a man or a woman after a sea bath...

Its salty and desirable skin.

Okoume wood and musks warm the floral-fresh-solar accord of ylang-ylang, Pacific algae and rosewood, while a hint of Indian hemp soils the composition of a slight animalic dimension.







## **PIERRE GUILLAUME CONFIDENTIAL** ANOTHER COLLECTION

---

**W**ith “*PIERRE GUILLAUME CONFIDENTIAL*”, the perfumer invites us into an intimate and dreamlike world, where the art of perfume is shaped through modern and urban universes imbued with surrealism or exoticism. All of PIERRE GUILLAUME CONFIDENTIAL's poetry is expressed in flasks clad in gold and graphite available in a very limited network of partner perfumeries.





## A UNE MADONE

### WOODY ANIMALIC VANILLA

Cardamom, Uganda Vanilla, Gaiac Milk Accord,

Animalic Sandalwood

Castreum, Civet, Myrrh, Styrax, Gurjum

### A MUSE OF CONTRADICTION

Grown in the volcanic hills of Uganda, with two rainy seasons and two harvests in January and mainly in July, Uganda vanilla is a *Planifolia*, broad and flat with a matte colour developing lively facets, notes of leather, fruity cocoa and peated single malt. A tomboy!

Cardamom and Sandalwood naturally underline the greedy and sensual curves of the vanilla pods, while Castoreum, Civet, Myrrh, Styrax, Gaiac and Gurjum increase their magnetism tenfold.



## ANTI-BLUES

### WOODY SPICY

Incense, Cocoa, Vetiver

Saffron, Amyris, Hay, Vanilla, Tobacco

### DARK CHOCOLATE AND INCENSE

Through a vapor of Incense mixed with Vetiver, the woody bitterness of Cacao Wood, Saffron and Amyris rises.

*Anti-Blues* deploys its greedy and dark nature by stretching its olfactory spectrum from the smell of Hay and Dark Chocolate to the animal nuances of a Vanilla hemmed with Leather and Tobacco.





## LA NUIT DE L'ORCHIDÉE

**FLORAL AMBER - LEATHERY**

Spices, Vanilla Orchid, Amyris, Leather

Pink Pepper, Styrax, Incense

### A LIQUID LEATHER

Witch flower, with a fruit similar to a leather sheath, the Vanilla Orchid is a sinner containing a sensory storm.

Pierre GUILLAUME offers to the skin the vertigo of a liquid leather: the scent of black pods struck by lightning on a stormy night.



## NOIR OKOUMÉ

**WOODY SMOKY POWDERY**

Loban, Oolong, Myrrh

Sandalwood, Orris

### HEART OF WOOD

*Noir Okoumé* tells us about the Wood-King of the Equatorial Forests and Kandéa Resin of Gabon, evoked through an accord of Loban, Oolong leaves, Myrrh, Sandalwood and Iris.







## **PIERRE GUILLAUME CONTEMPLATION**

### HAUTE PERFUMERY

---

**T**he “*PIERRE GUILLAUME CONTEMPLATION*” collection is a selection of new or original olfactory works from the archives of the PIERRE GUILLAUME PARIS Creation Studio. These “*Creations in the Absolute*”, produced in micro-series and in ultra-restricted distribution, represent the unbridled quintessence of PG’s Savoir-Faire applied to exceptional ingredients... our proposal of Haute Perfumery.





## AU ROYAUME DES FEMMES

**AMBER FLORAL – ANIMALIC**

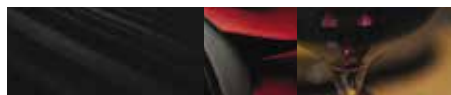
**Pepper Rose, Tonka Bean**

Animalic Benzoin

### TRIBAL WARRIOR AND DISCO DIVA...

On the shores of Lake Lugu, on the edge of the Himalayas, the country of the Mosuo is known as the kingdom of women. This people of ancient nomads is one of the last matriarchal societies on the planet: all the privileges and powers belong to women.

*"Au royaume des femmes"* is a peppermint-tonka bean rose set on a bed of animalised benzoin... a hybrid between tribal warrior and disco diva, my olfactory allegory of female empowerment.



## AU-DELÀ DU NOIR

**WOODY – FRUITY ANIMALIC**

**Davana, Blackcurrant bud, Ardent spices**

Kyara wood, Animalic notes

### A BLACK WAVE WITH RED REFLECTIONS...

A chimerical hybrid between the bouquet of a mythical red wine and an incense of oud.

Among the great vintages of the *"Côte de Nuits"*, there is one whose bouquet impregnated my memory for ever... In this creation, the reminiscences of this exceptional black wave with red reflections match the animal incandescence of Kyara Wood, beyond black.





## BAGATELLE ROMA

### FLORAL LEATHERY

Roses, Blackcurrant Leaves, Petrichor

Essence and Leather

#### PARISIAN DOLCE VITA...

When we had just opened our Parisian boutique, one of my colleagues asked me for an hour to pick up two rosebushes from the Bagatelle rose garden sales. He returned to the Palais Royal on his old vintage Vespa, the flower pots on the luggage rack, soaked by a rain shower.

Under my nose, the scent of old roses, the smell of damp earth and green leaves after the rain and the Vespa's exhalations of petrol and leather...

A snapshot of Italian Dolce Vita in the heart of Paris, which I will freeze in a perfume: Bagatelle Roma.



## FEMME EN SMOKING

### FLORAL - WOODY SPICY

Black Calla, Cardamom, Incense, Iris

Honey, Cedar, Sandalwood

#### A BLACK CALLA...

The smell of charcoal gliding over the drawing board, while a young designer, not yet a Grand Couturier, sketches a silhouette similar to a floral chalice, a Black Calla, a woman in a dinner jacket.





## HABANERA

**AMBER – TOBACCO SPICY GOURMAND**

Saffron, Candied Rose, Cuban Tobacco

Mexican Copal Resin, Benzoin, Leather

### A SENSUAL BODY TO BODY...

An explosive and torrid amber inspired by the lascivious rhythm of a South American dance, the skins brush against each other and seek each other out, in a sensual game of body to body.

*"Habanera"* is a procession of *"balsams under tension"* carried by volutes of Cuban tobacco, leather on a Mexican copal accord, saffron and candied rose.



## IRIZIA PEARL

**WOODY – SWEET FLORAL GREEN**

Sandalwood Sap, Rice Vapour, White Pearl Jasmine

Cachemere Wood, Amber, Musk

### A COCOON OF SAP, SWEET WOOD AND BALMS...

Between fresh green sap and soft, enveloping balsams, the structure of *"Irizia Pearl"* evokes the pulsations of concentric olfactory spheres, forming a Cocoon, of which it is the fragrant allegory.

All the notes appear as soon as they take flight and never really disappear to make room for others. They all resonate in unison with a heart of White Pearl Jasmine, surrounded by a shell of balsams and sweet woods with a vapour of rice and sandalwood sap.





## LES RACINES DU MÂLE

**WOODY – AMBERLY LEATHERY**

**Vetiver, Leather**

Incense and Tar Vapour, Guaiac

### A POISONOUS AND MYSTICAL VETIVER...

*“Les Racines du Mâle”* is a mystical, venomous vetiver that rises into a complex, resinous, warm and amber woody vapour.

After the 15 weeks of maceration necessary for each of the materials making up the fragrance to fully reveal their beauty and power, a metamorphosis takes place.

In the middle of the vetiver roots grew leather roots.

The product of an olfactory autogenesis, a chimerical note that the perfumer neither conceived nor anticipated, this unexpected *“leathery wave”* extends like a shadow over the composition, bringing it elegance and mystery.



## LUMIÈRE FAUVE

**DRY WOODS – MUSKY LEATHERY**

**Absolute African Stone, Moroccan Black Honey**

Leather, Tobacco, Cocoa, Animalized Musks

### NOT AN AMBER, NOR A CHYPRE... A FAWN.

The most animalistic of our Musks, radical, passionate and incandescent.

In the lion's cage... a feline facing its tamer, dodges the slaps of the whip, in a sweep of swaying steps.

While from the shadows and bleachers rise the scent of tobacco and cocoa, the leather ties hit the dance floor flooded with the light of the spotlights, like an intense accord of ylang-ylang and honey that blinds and inflames the senses..







## **PIERRE GUILLAUME BODY CARE**

### OUR FIRST LINE OF PERFUMING BODY CARE

---

**P**ierre GUILLAUME inaugurates his first range of bodycare dedicated to the bath ritual through two new products available in four “signature” fragrances from our collection. The hand and body cleansing gel and the perfumed hand and body lotion. In total eight new highly fragrant creations, eco-responsible formulas, respectful of the skin and predominantly natural, reaffirming the know-how of the house of PIERRE GUILLAUME PARIS.





## ISPARTA

**CLEANSING HANDS & BODY GEL**

Fruity Rose, Wood, Ambroxan

Size: 500 ml



## LE MUSC & LA PEAU

**CLEANSING HANDS & BODY GEL**

Rosemary Milk, Ylang-Ylang, Musks

Size: 500 ml



## LIQUEUR CHARNELLE

**CLEANSING HANDS & BODY GEL**

Spices, Cognac Accord, Blond tobacco, Powdery Wood

Size: 500 ml



## NÉROLI AD ASTRA

**CLEANSING HANDS & BODY GEL**

Neroli, Agave Flower, Pear

Size: 500 ml



## ISPARTA

### HANDS AND BODY LOTION

Fruity Rose, Wood, Ambroxan

Size: 500 ml



## LE MUSC & LA PEAU

### HANDS AND BODY LOTION

Rosemary Milk, Ylang-Ylang, Musks

Size: 500 ml



## LIQUEUR CHARNELLE

### HANDS AND BODY LOTION

Spices, Cognac Accord, Blond Tobacco, Powdery Wood

Size: 500 ml



## NÉROLI AD ASTRA

### HANDS AND BODY LOTION

Neroli, Agave Flower, Pear

Size: 500 ml



## EAU HYG  ENNE

**SCENTED REFRESHING  
COURTESY WATER**

Bergamot, Neroli, Gardenia, Cedar

### SCENTED REFRESHING COURTESY WATER

"Eau Hygeenne" is a light perfuming water for the body. Its fragrance with refreshing notes of Bergamot, Neroli, Gardenia and Cedar, gently perfumes the body every day.

To be used in friction, by application to the palm of the hands. Enriched in glycerin, it leaves the skin soft, non-oily and delicately scented.



Size: 500 ml



## EAU ZEST  E

**SCENTED INVIGORATING WATER  
WITH 14 PLANT EXTRACTS**

Bergamot, Cananga, Cinnamon, Lemon, Galbanum,  
Labdanum, Lavandin, Patchouli, Petit Grain, Black  
Pepper, Tagette, Thyme, Exotic Verbena, Yuzu

### SCENTED INVIGORATING WATER WITH 14 PLANT EXTRACTS

"Eau Zest  e" is a lively and invigorating scented water. Its fragrance composed of 14 plant extracts, with invigorating notes, perfumes the body and awakens the senses on a daily basis.

To be used in particular after sport, in friction, by application to the palm of the hands. Enriched in glycerin, it leaves the skin soft, non-oily and delicately scented.



Size: 500 ml



# PARENTHÈSE ENCHANTÉE

## SCENTED AROMATIC RELAXING WATER

Apple Blossom, Rosewood, Salt Flower

### SCENTED AROMATIC RELAXING WATER

"Parenthèse Enchantée" is a relaxing scented water. On an accord of Apple Blossom, Rosewood and Salt Flower, its fragrance invites you to dream and change of scenery. It leaves on the skin the perfume of salt, as after a sea bath.

Can be used daily, in friction on the body, by application in the palm of the hands. Enriched in glycerin, it leaves the skin soft, non-oily and delicately scented..



Size: 500 ml







## **PIERRE GUILLAUME L'ATMOSPHÈRE**

### SCENTED CANDLES AND HOME FRAGRANCED SPECIALITIES

---

**B**y entrusting his perfumes to French Candlemakers and relying on his know-how as an industrial chemical formulator, Pierre GUILLAUME has been developing since its inception objects intended to dressed and sign the atmosphere of our places of life.





## AMSTERDAM

### SCENTED CANDLE

Plum, BlackTea and Blond Tobacco

Net weight: 240 g



## ARUBA

### SCENTED CANDLE

Tonka Beans and Gaïac Wood

Net weight: 240 g



## CANCÚN

### SCENTED CANDLE

Coconut and Copal Resin

Net weight: 240 g



## HIBISCUS

### SCENTED CANDLE

Hibiscus Flower and Warm Sand

Net weight: 240 g



## LEAF

### SCENTED CANDLE

Patchouli, Mint, and Fig Leaves

Net weight: 240 g



## MOJITO

### SCENTED CANDLE

Rhum, Strawberries and Mint

Net weight: 240 g



## SAIGON

### SCENTED CANDLE

Leather and Red Fruit Tea

Net weight: 240 g



## TAIGA

### SCENTED CANDLE

Siberian Cedar and Bison Herb

Net weight: 240 g



## BIENVUEILLANTE

**MESSENGER SCENTED CANDLE**

Hay, Incense, Lavender

Net weight: 240 g



## FLAVESCENTE

**MESSENGER SCENTED CANDLE**

Amber, Precious Wood, Leather and Honey

Net weight: 240 g



## LA ROSE D'ISPARTA

**MESSENGER SCENTED CANDLE**

Fruity Rose, Wood, Ambroxan

Net weight: 240 g



## NIVEENNE

**MESSENGER SCENTED CANDLE**

Sandalwood, Heliotrope and Vanilla

Net weight: 240 g



## VESPERALE

**MESSENGER SCENTED CANDLE**

Orange Wood Leather, Bois de Violette

Net weight: 240 g



# FORÊT BORÉAL

SCENTED CANDLE - LIMITED EDITION

Siberian Pine, Birch, Honey

Net weight: 240 g



## ÉBÈNE CONSTELLATION

**ORNAMENTAL SCENTED CANDLE**

**Leather, Ginger, Ebony wood**

Net weight: 1,5 kg



## LUNE TONKA

**ORNAMENTAL SCENTED CANDLE**

**Tonka Bean, Cedarwood, Rosewood**

Net weight: 1,5 kg



# NUIT D'ISPARTA

## ORNAMENTAL SCENTED CANDLE

Isparta Rose, Blackcurrant leaves, Mahogany wood

Net weight: 1,5 kg





## HIBISCUS

**LA GACHETTE - ROOM SPRAY**

Hibiscus Flower and Warm Sand

Size: 500 ml



## LEAF

**LA GACHETTE - ROOM SPRAY**

Patchouli, Mint, and Fig Leaves

Size: 500 ml



## SAIGON

**LA GACHETTE - ROOM SPRAY**

Leather and Red Fruit Tea

Size: 500 ml



## TAIGA

**LA GACHETTE - ROOM SPRAY**

Siberian Cedar and Bison Herb

Size: 500 ml



## HESPERIDREAM

### PILLOW MIST

Mandarin, Sage, California Poppy Blossom

Size: 50 ml - 100 ml



## PILLOW POEM

### PILLOW MIST

Grapefruit, Rose-Tea, Peony and Sandalwood

Size: 100 ml



## HESPERIDREAM

### PERFUMED MIST FOR HOUSEHOLD LINEN

Mandarin, Sage, California Poppy Blossom

Size: 500 ml

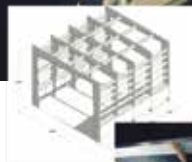


## REBOOT THE LOO

### PRE & POST POO ODOR NEUTRALIZER

Verbena, Liquorice, Mint Leaves

Size: 100 ml



Pierre GUILLAUME entrusted the architect **François LEBEL** with the task of carrying out the metamorphosis of one of its stores in the manner of **an anamorphosis by Georges ROUSSE**. Through a play of light and shapes that disturbs our perception of volumes and perspective, a new “space within space” appears at the heart of the boutique.

The place becomes **the theatrical landmark** of a work in bronze and tuja by **the sculptor Roland COGNET**.

A **Peregrine Falcon** perched on a tree trunk sits as the guardian of the place.

In the shade of this stylised forest, the bird seems **ready to take flight** and carry our thoughts away in the shadow of this stylised forest, with its piercing gaze turned towards the visitor, through an open roofed sky, whose azure blue is reminiscent of the brand's packaging. COGNET's sculptures illustrating its reflection on the 4 fundamental essences, **mineral, plant, human and animal**, resonate with **the perfumer's aesthetic codes and personal aspirations** and watch over other sites of Pierre GUILLAUME perfumes. This **new Clermont-Ferrand boutique** at Le Faucon Pèlerin **now echoes the Parisian boutique** at the Palais Royal decorated with a Red Monkey and the Manufacture guarded by a Brown Wolf.





**CLERMONT-FERRAND (QUARTIER VICTOIRE)**

**PIERRE GUILLAUME PARFUMEUR**

17 Bis Rue Saint-Genès - 63000 CLERMONT-FERRAND

Tél. +33 (0)4 43 11 40 63



**PARIS (PALAIS ROYAL)**  
**PIERRE GUILLAUME PARFUMEUR**  
13 Rue Jean-Jacques Rousseau - 75001 PARIS  
Tél. +33 (0)1 45 08 46 17



PARIS

**PRINTEMPS HAUSSMANN**

61 Rue Caumartin - Niveau +1 - 75009 PARIS  
Tél. +33 (0)1 45 08 46 17



PARIS

**SENS UNIQUE**

13 Rue du Roi de Sicile - 75004 PARIS  
Tél. +33 (0)1 71 50 30 09



BORDEAUX

**LA PARFUMERIE BORDELAISE**

17 Rue du Temple - 33000 BORDEAUX  
Tél. +33 (0)5 56 81 14 56



TAIWAN

**NOSEWAY**

Q Square-1F, No. 1, Section 1, Chengde Road - TAIPEI  
Tél. +886 2 2552 7535



Pierre Guillaume

PIERREGUILLAUMEPARIS.COM

 @pierreguillaumeparis  @pierreguillaume\_parfumeur