



Perfume by Name

PERFUME HOUSE FOUNDED IN 2005
INTIMATELY LINKED TO THOSE WHO KNOW







ABOUT THE BRAND

HISTORY	P. 6
KEY DATAS	P. 8
NOMAD SHOP	P. 10
OUR EMBLEM BOTTLE	P. 11
SIGNATURE SPECIALITIES	P. 12
THE MANUFACTURE	P. 13

OUR STORES

PG MANUFACTURE CLERMONT	P. 14
PG CLERMONT	P. 16
PG PARIS	P. 18
PG LYON	P. 20
PG BELGRADE	P. 22

PIERRE GUILLAUME PARIS

02 COZÉ (TOBACCO)	P. 26
03 CUIR VENENUM (LEATHER)	P. 26
3.1 ARABIAN HORSE (LEATHER)	P. 27
04 MUSC MAORI (MUSKS)	P. 27
4.1 LE MUSC & LA PEAU (MUSKS)	P. 28
LE MUSC & LA PEAU 200 ML (MUSKS)	P. 28
LE MUSC & LA PEAU EXTRAIT (MUSKS)	P. 29
05 L'EAU DE CIRCÉ (OSMANTHUS)	P. 29
5.1 SUEDE OSMANTHE (OSMANTHUS)	P. 30
07 SOLSEKIA (HESPERIDES)	P. 30
7.1 GRAND SIÈCLE INTENSE (HESPERIDES)	P. 31
7.2 MORNING IN TIPASA (HESPERIDES)	P. 31
08 INTRIGANT PATCHOULI (PATCH-WORKS)	P. 32
8.1 L'OMBRE FAUVE (PATCH-WORKS)	P. 32
09 YUZU AB IRATO (FLORAL AROMATIC)	P. 33
9.1 KOMOREBI (FLORAL AROMATIC)	P. 33
10 AOMASSAÍ (COFFEE)	P. 34
10.1 BOUQUET MASSAÍ (COFFEE)	P. 34
11.1 INDIAN WOOD (SPICY AROMATIC)	P. 35
11.2 SPICEMATIC (SPICY AROMATIC)	P. 35
12 HYPERESSENCE MATALE (CHYPRE TEA)	P. 36
12.1 UN CRIME EXOTIQUE (CHYPRE TEA)	P. 36
13 BRÛLURE DE ROSE (ROSE(S))	P. 37
13.1 LA NYMPHE & LE POÈTE (ROSE(S))	P. 37

14.1 CUIR D'IRIS (IRIS)	P. 38
14.2 COSTUME LIQUIDE (IRIS)	P. 38
15.1 HAPYANG (FLORAL)	P. 39
16 JARDINS DE KÉRYLOS (FIGS)	P. 39
16.1 BOIS NAUFRAGÉ (FIGS)	P. 40
17 TUBÉREUSE COUTURE (TUBEROSE)	P. 40
18 CADJMÉRÉ (SANDALWOOD)	P. 41
18.1 PRALINÉ DE SANTAL (SANDALWOOD)	P. 41
19 LOUANGES PROFANES (ORANGE BLOSSOM)	P. 42
19.1 NÉROLI AD ASTRA (ORANGE BLOSSOM)	P. 42
20 L'EAU GUERRIÈRE (INCENSE)	P. 43
21 FELANILLA (VANILLA)	P. 43
21.1 ORCHIDIVY (VANILLA)	P. 44
22 DJHENNÉ (FOUGERE)	P. 44
22.1 TIGRE D'EAU (FOUGERE)	P. 45
23.1 JASMAGONDA (JASMINE)	P. 45
25 INDOCHINE (SOFT SPICY)	P. 46
26 ISPARTA (NEO CHYPRE)	P. 46
27 LIMANAKIA (MINERAL)	P. 47
28 PEAU D'AMBRE (AMBER)	P. 47
29 ITABAÏA (HESPERIMENTAL)	P. 48
30 ALPHAORA (GLAMMOSS)	P. 48
31 TONKA BODYKON (TONKA)	P. 49
31.1 L'AIR & L'EROS (TONKA)	P. 49

PIERRE GUILLAUME CRUISE

ENTRE CIEL ET MER	P. 52
LONG COURRIER	P. 52
LUNE D'EAU	P. 53
MÉTAL HURLANT	P. 53
MOJITO CHYPRE	P. 54
PARIS FIDJI	P. 54
RIVAGES NOIRS	P. 55
SAMBAKA	P. 55

PIERRE GUILLAUME BLACK COLLECTION

AMBRE CÉRULÉEN	P. 58
ANIMAL MONDAIN	P. 58
AQAYSOS	P. 59
FAREB	P. 59

LIQUEUR CHARNELLE	P. 60
MAD ABOUT YOU	P. 60
MANGUIER MÉTISSE	P. 61
MÉCANIQUE DU DÉSIR	P. 61
MONSIEUR	P. 62
MYRRHIAD	P. 62
POUDRE DE RIZ	P. 63
SUCRE D'ÉBÈNE	P. 63
SUPERLADY	P. 64
VOHINA	P. 64

PIERRE GUILLAUME WHITE COLLECTION

DIALOGUE WITH VENUS	P. 68
HELIOFLORA	P. 68
INTIME.EXTIME	P. 69
OSHISO	P. 69
SUNSUALITY	P. 70
SWIM/SX	P. 70

PIERRE GUILLAUME CONFIDENTIAL

A UNE MADONE	P. 74
ANTI-BLUES	P. 74
LA NUIT DE L'ORCHIDÉE	P. 75
NOIR OKOUMÉ	P. 75

PIERRE GUILLAUME CONTEMPLATION

AU ROYAUME DES FEMMES	P. 78
AU-DELÀ DU NOIR	P. 78
BAGATTELLE ROMA	P. 79
FEMME EN SMOKING	P. 79
HABANERA	P. 80
IRIZIA PEARL	P. 80
LES RACINES DU MÂLE	P. 81
LUMIÈRE FAUVE	P. 81

PIERRE GUILLAUME BODY CARE

AQAYSOS GEL 250 ML	P. 84
MORNING IN TIPASA GEL 250 ML	P. 84
NÉROLI AD ASTRA GEL 250 ML	P. 84
LE MUSC & LA PEAU LOTION 250 ML	P. 84

NÉROLI AD ASTRA LOTION 250 ML	P. 84
AQAYSOS GEL 500 ML	P. 85
LIQUEUR CHARNELLE GEL 500 ML	P. 85
MORNING IN TIPASA GEL 500 ML	P. 85
LE MUSC & LA PEAU GEL 500 ML	P. 85
NÉROLI AD ASTRA GEL 500 ML	P. 86
LIQUEUR CHARNELLE LOTION 500 ML	P. 86
LE MUSC & LA PEAU LOTION 500 ML	P. 86
NÉROLI AD ASTRA LOTION 500 ML	P. 86
BONHEUR DU JOUR 200 ML	P. 87
EAU DE COURTOISIE 500 ML	P. 87

PIERRE GUILLAUME L'ATMOSPHÈRE

AMSTERDAM CANDLE	P. 90
ARUBA CANDLE	P. 90
CANCÚN CANDLE	P. 90
LEAF CANDLE	P. 90
MOJITO CANDLE	P. 90
SÁIGON CANDLE	P. 90
BIENVILLANTE CANDLE	P. 91
FLAVESCENTE CANDLE	P. 91
LA ROSE D'ISPARTA CANDLE	P. 91
NIVÉENNE CANDLE	P. 91
VESPERALE CANDLE	P. 91
ÉBÈNE CONSTELLATION CANDLE	P. 92
LUNE TONKA CANDLE	P. 92
NUIT D'ISPARTA CANDLE	P. 92
HIBISCUS GACHETTE	P. 93
LEAF GACHETTE	P. 93
SÁIGON GACHETTE	P. 93
TÁIGA GACHETTE	P. 93
TONKA GACHETTE	P. 93
HESPERIDREAM	P. 94
PILLOW POEM	P. 94
REBOOT THE LOO	P. 95
RITUEL AFTER LUST	P. 95
PARURE D'AMBIANCE	P. 95

***“The perfume is a wonderful self-enhancer,
it is the artistic expression of a scientific discipline
combining technique and poetry.”***

INDEPENDENT PERFUMER

It is in Auvergne, in his **own workshops**, that Pierre GUILLAUME develops a **contemporary and eclectic perfumery** in complete creative and financial **independence**. †



O2 COZÉ: TO THE ORIGINS OF THE BRAND

Young chemist: Pierre GUILLAUME, **was only 25 years old** when he tried to reproduce the smell of **his father's cigar cellar**. This Tobacco-Spicy accord baptized “O2 Cozé” **was quickly spotted by the Critics who popularized it** in the perfume blogosphere and with professional buyers around the world in the early 2000s. †





INDEPENDENCE

In 2010, the company PIERRE GUILLAUME DIFFUSION was created and **internally equipped** with a production tool including a **composition studio**, a **cellar of raw materials** and a **packaging line dedicated to the manufacture** of the perfumes imagined by Pierre GUILLAUME. He creates and manufactures his perfumes, **in total creative freedom** under the PIERRE GUILLAUME PARIS brand, which are distributed in nearly **415 points of sale in 37 countries.** ♦



TODAY AND TOMORROW

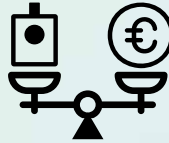
To propose a contemporary, inventive, poetic and wearable perfumery. Mastering in-house design and manufacturing to guarantee quality products at realistic prices. To renew ourselves to never tire, to innovate and produce in a reasoned, **clean and sustainable way.** To grow through the satisfaction of the women and men who wear our fragrances and talk about them. To develop and remain faithful to our values, because reputation goes up the stairs and down the lift! ♦

At PIERRE GUILLAUME PARIS, we only make perfume... And that's already a lot.

PIERRE GUILLAUME PARIS



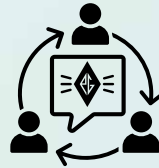
One of the founding French Niche 2.0 brands, first fragrance created in 2002!



A generalist brand, **inventive yet easy to wear** on a daily basis, **aimed at everyone** with a **fair price** positioning.



A brand that **builds loyalty** and is always looking **to improve itself**: a well-advised PIERRE GUILLAUME PARIS customer is a customer who remains loyal to the brand.



A brand, but one that **has been growing** thanks to **endless customer to customer communication**: no investors, no fund-raising: its growth is directly linked to its commercial reality.



We note that **7 out of 10 new customers** come from the so-called "mainstream network", sometimes on the advice of salespeople who see us as complementary.

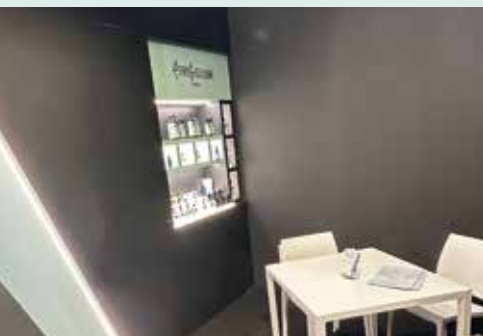


PIERRE GUILLAUME PARIS





THE NOMAD SHOP: CORNER PIERRE GUILLAUME PARIS 22 m²





A SCREEN BOTTLE

A WINDOW ONTO THE ESSENCE AND ESSENTIALS

*“Choosing a bottle for a new perfume house is a difficult challenge for anyone trying to project it over time. A form of classicism, of sobriety, seems to be a reasonable direction. The term ‘minimalist’ is overused and vague, so I opted for accuracy and precision. The function will be the sole muse of the design: **to contain and show what is essential: the fragrance.**”*
 Pierre GUILLAUME

A rectangular face contrasting with subtly curved sides, at ease in both men’s and women’s hands. Inner edges reduced to the very limit of technical constraints, making this bottle nothing more than **a screen over a liquid poem, a window onto the essence and the essential.** ♦



A PENCIL STROKE “EX TEMPORE”

Capped with a discreet cylindrical cap and a roundel 35 mm in diameter displaying the fragrance’s title, our bottle is an easily identifiable silhouette, an **ex tempore** pencil line, a logo bottle, **an emblem bottle.**

An ecological and environmental conscience **from 2005**: glass bottle, labels and pump can be easily removed for easy recycling. A featherweight cap with a combination of aluminium and plastic weighing just 2.7g: **an example of sobriety.** ♦



SIGNATURE SPECIALITIES

OLFACTORY SEALS OF THE HOUSE PIERRE GUILLAUME PARIS

Obsidial®, **Hypralone®**, **Strelitzial®** & **Karacénide®**:

PIERRE GUILLAUME PARIS' signature specialities to protect a style and enhance the technical performance of our creations.

In order not to be totally outdone by the innovations in fundamental research into the chemistry of odorous bodies of the big names in the perfume industry and their captive ingredients, an independent composition house such as ours must redouble its vigilance and efforts to stay in the race for diffusivity and staying power and protect its creations from excessive counterfeiting by developing its own technological tools. ♦

Pierre GUILLAUME perfumes devote part of their R&D to the development of “**Signature Specialities**”, which are **intended as “olfactory seals”** affixed to our creations, a sort of common thread from one creation to the next, to underline their belonging to the PG style, protect the formulas and improve their technical performance. Since 2015, PIERRE GUILLAUME PARIS has developed a series of Signature Specialities on which all our commercial successes have been based:



HYPRALONE®:

A musky speciality described as “epidermal” by the perfumer, it combines the elegance of macrocyclics with a subtly warm, animalic undertone. It creates wonderful synergies with floral notes. It is found in **Le Musc & La Peau**, **Aqaysos** and **Komorébi**. ♦



STRELITZIAL®:

A fresh, transparent floral speciality with aquatic and exotic tones, it brings naturalness and elegance to compositions and enhances the floral accords of almost all our creations. ♦



KARACENIDE®:

A woody speciality, a sort of fiery “salty-dirty-kiss”. It has the greenness of sapwood and pierces the compositions from base to top. It brings power and volume and creates space between the notes. It can be found in **Liqueur Charnelle**, **Djhenné**, **Aqaysos**, **La Nympe & le Poète**, **Bois Naufragé**, etc. ♦



OBSIDIAL®:

Floral volumising agent, inspired by the particular scent of Volvic stone heated by the sun just after a rain shower. **OBSIDIAL®** owes its performance to a synergy of 4 molecules that impact both the head and heart (volume) and the base (persistence) of compositions. Its olfactory profile can be described as: mineral, aqueous floral, spicy. It is responsible for the strength and volume of **Costume Liquide**, **Tigre d'Eau** and our recent **Accord Rose-Météore**. ♦

“From laboratory to boutique... our Manufacture is a hybrid place”



PIERRE GUILLAUME PARIS PERFUME MANUFACTURE DESIGNING AND PRODUCING OUR LIQUID POEMS

Although the brand's commercial activities are run from the first arrondissement of Paris, we produce in our own factory in the Auvergne. Once the formulas have been developed and validated by Pierre GUILLAUME in **his Creative Studio**, it's the **Cellar Master's** turn to manage the maceration, ageing, post-treatments and filtration of the juices, **which are weighed by the perfumer himself in the Raw Materials Cellar**, who is the only one to handle the precious formulas. From their immaculate counters, **les Dames de table** (*productions assistants*), wearing charlottes and embroidered blouses, meticulously carry out the 11 steps required to assemble a perfume bottle. ♦

**“Perfume is ‘l'intime-extime’, in other words,
a part of intimacy that we reveal.”**





For this **4th French boutique**, perfumer Pierre GUILLAUME and architect François LEBEL continue to map the codes and DNA of the House of PIERRE GUILLAUME PARIS by imagining a narrative and spacious place.

The Pierre GUILLAUME Manufacture boutique is **a hybrid space exploring the concept of "poetic brutalism"**. The space is a large monochrome box covered from floor to ceiling with the same gray hue suggesting the bareness and radical simplicity of concrete.

The visitor seems at first to be immersed in **a volume with a deliberately synthetic and uniform aspect** from which, little by little, the eye will be able to make emerge from these tense surfaces and underlined by lines of light, **a precise assembly of textures going from vinyl to granite.**

Then the incident: this sanitized and smooth vessel is **literally torn in its angle by a spur of volcanic rock** that projects to the center of the volume, becoming the promontory of **a bronze cub**. Work of the sculptor **Roland COGNET**, it seems to evolve in balance, imposing its animal presence on the spectator, an invitation to calm and contemplation.





PIERRE GUILLAUME PARFUMEUR
STORE & MANUFACTURE
25 Rue Pierre Boulanger
63100 CLERMONT-FERRAND - FRANCE



Pierre GUILLAUME entrusted the architect **François LEBEL** with the task of carrying out the metamorphosis of one of its stores in the manner of **an anamorphosis by Georges ROUSSE**. Through a play of light and shapes that disturbs our perception of volumes and perspective, a new "space within space" appears at the heart of the boutique. The place becomes **the theatrical landmark** of a work in bronze and thuja by **the sculptor Roland COGNET**. A **Peregrine Falcon** perched on a tree trunk sits as the guardian of the place.

In the shade of this stylised forest, the bird seems **ready to take flight** and carry our thoughts away in the shadow of this stylised forest, with its piercing gaze turned towards the visitor, through an open roofed sky, whose azure blue is reminiscent of the brand's packaging. COGNET's sculptures illustrating its reflection on the 4 fundamental essences, **mineral, plant, human and animal**, resonate with **the perfumer's aesthetic codes** and **personal aspirations** and watch over other sites of Pierre GUILLAUME perfumes. This **new Clermont-Ferrand boutique** at Le Faucon Pèlerin **now echoes the Parisian boutique** at the Palais Royal decorated with a Red Monkey and the Manufacture guarded by a Brown Wolf.





PIERRE GUILLAUME CLERMONT-FERRAND
QUARTIER VICTOIRE
17 Bis Rue Saint-Genès
63000 CLERMONT-FERRAND - FRANCE



Just a stone's throw from the **Palais Royal** and the **Bourse de Commerce - Fondation Pinault**, the visitor, discovering the universe of the house of **PIERRE GUILLAUME PARIS**, is welcomed by a bronze "Red Monkey" by the sculptor **Roland COGNET**, seemingly guarding this place, conceived as a temple of perfumery. The sloping walls recalling the profile of the emblematic PG bottle, the mineral atmosphere surrounded by light and the warm blond woods invite you to a sensory journey through our fragrance collections.



In the "Crypt", the second exhibition level of this **intimate space**, you will find all our collections: PIERRE GUILLAUME PARIS, PIERRE GUILLAUME CRUISE, PIERRE GUILLAUME BLACK COLLECTION, PIERRE GUILLAUME WHITE COLLECTION, PIERRE GUILLAUME CONFIDENTIAL, PIERRE GUILLAUME LATMOSPHÈRE, PIERRE GUILLAUME BODY CARE, and exclusive creations by perfumer Pierre GUILLAUME.



PIERRE GUILLAUME PARIS
PALAIS ROYAL
13 Rue Jean-Jacques Rousseau
75001 PARIS - FRANCE



Perfumer Pierre GUILLAUME opened his **third French boutique** at number 1 rue Emile Zola, in a 19th century building in the heart of Lyon's Presqu'île. Rue Emile Zola links **Place Bellecour** to **Place des Jacobins**. It belongs to the area classified as a world heritage site by UNESCO. It is one of the busiest shopping streets in Lyon.

One of the street's historical inhabitants is Jean-Jacques Rousseau, a nod to fate, as the brand's first shop was located at 13, rue Jean-Jacques Rousseau in Paris.

BLUE CANOPY, ICONIC COLOUR

*"The chromatic code of the House of PIERRE GUILLAUME PARIS is a combination of **Canopy Blue** and black. Canopy Blue is a shade that Pierre GUILLAUME has thought of as a **celestial blue infused with a plant element**. Blue or green... its perception is divided, but its poetry, its luminosity and its particular aura of naturalness are unanimously recognised and become recognisable at a glance."*





PIERRE GUILLAUME LYON
QUARTIER JACOBINS
1 Rue Émile Zola
69002 LYON - FRANCE




Maison PIERRE GUILLAUME has opened its first international boutique in the heart of the Old Town in Belgrade, Serbia.

Located at **75, Kralja Petra**, the space, designed by architect **Sanja STOJAKOVIC**, spans 33 m² and reflects all the House's aesthetic codes. Canopée blue with black highlights, warm woods and lines of light streaming across the ceiling and caressing the brick vault.

The animal totem, the symbol of PIERRE GUILLAUME boutiques, is a bronze eagle signed by artist **Drinka RADOVANOVIC**.

Under the Direction of our Partner **Milica KOSTIC**, the perfume consultants, will be presenting the brand's entire catalogue and PIERRE GUILLAUME creations.

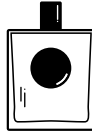
 @pierreguillaume_parfumeur_srb

Aesthetic codes: Pierre Guillaume – Architect: Sanja Stojakovic – Sculptor: Drinka Radovanovic.



PIERRE GUILLAUME BELGRADE
STARI GRAD
Kralja Petra 75
BELGRADE - SERBIA





PIERRE GUILLAUME PARIS

TALKATIVES PERFUMES, OLFACTORY EPICS

Each of the fragrances in this numbered collection (formerly Parfumerie Générale) is a new stopover in a journey to the heart of the **PIERRE GUILLAUME PARIS style**. Using the mixture of genres, the creator spontaneously expresses his olfactory aesthetic and his personal tastes. He explores in turn different numbered olfactory themes, which follow one another in this numbered collection. Thus his tobaccos are grouped under theme O2, his orange blossoms under theme 19, his aromatic flowers under theme O9, etc. **The fragrances in the collection are often described as talkative and compared to twists and turns for their evolving character on the skin, a real olfactory signature** of the PIERRE GUILLAUME PARIS style.





02 COZÉ

WOODY - SPICY VIBRANT

Indian Hemp, Spices, Blond Tobacco

Cocoa, Patchouli, Ebony Wood

THE INSPIRATION

The fragrance of his father's cigar box:
Cohiba, Monterrey,
Trinidad combined with ebony...

THE PERFUME

Sensual tobacco fragrance,
Spicy, Complex, Precious...

THE NAME

A contraction of "C'est Osé" (daring) the code name that figures on the tiny label of the first scent assembled by Pierre GUILLAUME.



03 CUIR VENENUM

DRY WOODS FLORAL

Orange Blossom Absolute, Leather, Honey

Myrrh, Styrax, Musk

THE INSPIRATION

While attending a presentation of Jean-Claude Jitrois' collection, the perfumer was seduced by the smell of a stretch leather dress on the skin of the model wearing it.

THE PERFUME

A disturbing harmony that reminds us that leather, before being a material, was also a living skin.

THE NAME

Evocation of the smell of leather that penetrates the skin and fuses with it, like a venom.



3.1 ARABIAN HORSE

**CHYPRE FLORAL, ATYPICAL,
SENSUOUS & ANIMALIC**

Wet Grass, "Horse's mane", Amber

Narcissus, Musk

THE INSPIRATION

This unusual, figurative leather follows a horse racing through the damp countryside...

THE PERFUME

The vegetable freshness of wet grass and wild flowers, heart notes, dominated by leather, adorned with a surprising "horse's mane" accord on a bed of animalic musks.

Subtle oriental hues to this equestrian painting...

THE NAME

A horse racing.



04 MUSC MAORI

AMBER - MUSKY

Chocolate Milk, Musk

Rosewood, Jasmine

THE INSPIRATION

Memories of childhood breakfasts, deliciously regressive.

THE PERFUME

A bowl of bergamot-sweetened hot chocolate with amber echoes.

THE NAME

Like a Maori tattoo with dark intertwined symbols on a clear background, *Musc Maori* unites the whiteness of musk against the darkness of cocoa bean absolute.



4.1 LE MUSC & LA PEAU

WOODY AMBER - MUSKY

Rosemary, Milky Musk, Tonka

Ylang-Ylang, Amber

THE INSPIRATION

The sensuality of clean skins that mix together.

THE PERFUME

A milk of 7 musks with skin scent, dressed with sensual balms and warm woods.

THE NAME

A second-skin effect perfume, like a white shirt put in the morning. The journalist Sarah Bouasse wrote on this perfume:

"it smell just like us but... better!"



LE MUSC & LA PEAU

SPLASH AND SPRAY - 200 ML

WOODY AMBER - MUSKY

Rosemary, Milky Musk, Tonka

Ylang-Ylang, Amber

THE INSPIRATION

The sensuality of clean skins that mix together.

THE PERFUME

A milk of 7 musks with skin scent, dressed with sensual balms and warm woods.

THE NAME

A second-skin effect perfume, like a white shirt put in the morning. The journalist Sarah Bouasse wrote on this perfume:

"it smell just like us but... better!"



LE MUSC & LA PEAU

EXTRAIT DE PARFUM

WOODY AMBER - MUSKY

Rosemary Milk, Hypralone® Musk, Ylang-Ylang

Amber, Cedar, Sandalwood

THE INSPIRATION

His skin... and then there's the skin: a fragile sensory envelope that shelters our humanity.

THE PERFUME

A milk of rosemary, a balance of musk and the scent of skin dressed in amber, cedar and sandalwood.

THE NAME

Musk, skin, the obvious act of perfuming. Neither animal nor detergent, this Musk speaks to us of the intimacy of our skin and our humanity.



05 L'EAU DE CIRCE

MELANCHOLIC FLORAL FRUITY

Plum, Osmanthus, Sandalwood

Rose, White Peach, Honey

THE INSPIRATION

A perfume from the 30s, forgotten, never opened, only to be rediscovered, perfectly intact, enhanced by a Hollywood-style charm and nostalgia of red lipstick.

THE PERFUME

"Fruity-floral" melancholy with a hint of Hitchcockian femininity.

THE NAME

The legend of Circe, the enchantress, with her head of flowers and fruits, depicted by many as the femme fatale.



5.1 SUEDE OSMANTHE

ALDEHYDIC FLORAL LEATHERY

Aldehyd, Black Tea Leaves, Suede

Osmanthus, Apricot

THE INSPIRATION

A perfume on the theme of osmanthus, absent from the olfactive pyramid, but whose fruity, floral and leathery accents are evocated by a game of olfactive chimeras.

THE PERFUME

A tenderly leathered floral, infused with apricot and black tea notes.

THE NAME

A precious Suede, a thin and delicate skin, playing with the olfactive illusion of an osmanthus, conspicuous by its absence.



07 SOLSEKIA

HESPERIDIC - WOODY FLORAL MUSK

Mexican Orange Tree, Driftwood, Vetiver

Citrus, Blue Agave, Pimento

THE INSPIRATION

SolSekia is a private garden on the Mayan Riviera: the softness of a Mexican Orange Blossom caressed by the sea winds, the vegetal freshness of Aloe Vera enhanced by the chilli pepper leaves.

THE NAME

SOLSEKIA / SOLSEQUIA:
from SOL ("sun") and SEQUOR ("follow"):
which follows the sun.



7.1 GRAND SIÈCLE INTENSE

HESPERIDIC - CHYPRE POWDERY

Citrus, Iris, Honey, Chypre

Galbanum, Cypress

THE INSPIRATION

For this 2021 rewriting, the classic duo Hesperides-Vetiver, expresses itself through new proportions. Free of aromatics, citrus fruits radiate, tearing with their subtle nuances, a veil of iris and honey hiding a chypre background with a contemporary roundness.

THE NAME

Liquid French Classicism.



7.2 MORNING IN TIPASA

HESPERIDIC - BALMY AROMATIC

Wild Lemongrass, Peppermint, Mediterranean Pine

Bergamot, Jujube Tree Honey

THE INSPIRATION

Wedding in Tipasa (1938) by Albert Camus is one of my favorite texts: The author vividly depicts the summer, the rites of youth in Tipasa, with its Roman ruins and the sea below, exalting nature and the beauty of bodies under the sun. "*Possession of the wave*"... the words of Camus resonate in my head as a perfumer and my mind wanders among the remains scattered between sea and mountain, listing the Algerian flora: bergamot trees, wild lemongrass, peppermint, Mediterranean pine and jujube tree in the "*sun-blackened*" countryside. Diving in the water from the rocks, one morning in Tipasa...

THE NAME

Tipasa, from the name of the Algerian coastal city, which means place of passage or stopover.



08 INTRIGANT PATCHOULI

CHYPRE – ANIMALIC

Patchouli, Mysore Sandalwood, Amber

Cinnamon, Ginger, Musk

THE INSPIRATION

The transformation of a bohemian wood into an elegant and complex elixir inspired by the Chypres of the 40s.

THE PERFUME

An aristocratic Patchouli, rich, sensual and talkative...

THE NAME

Patchouli borne high by the most precious of sandalwoods.



8.1 L'OMBRE FAUVE

FAUVE: WOODY ANIMALIC AMBERY

Red Amber, Civet, Patchouli

Bergamot, Vanilla, Animalic Musk

THE INSPIRATION

Not an Amber, nor a Chypre... but a Fauve, first Rework on the olfactive theme of patchouli.

THE PERFUME

All the bestiality of an animalic accord swathed in dark precious woods. Hiding beneath a heavy opulent amber skin the feline elements raise their heads to distil their primitive charms.

THE NAME

A bestial Amber, that follows like a shadow.



09 YUZU AB IRATO

CITRUS FLORAL AROMATIC

Yuzu, Myrtle, Magnolia

Mint Leaves, Lemon, Thyme

THE INSPIRATION

The perfumer was disturbed while working on a bouquet of white flowers and dosing the citrus accord for the head note; in a fit of rage, he added a huge dose of the Yuzu japonica essential oil. Springing from a suave floral the fragrance became an aromatic floral citrus.

THE PERFUME

A calm, sensual freshness, somewhere between a Japanese garden and Mediterranean nature.

THE NAME

"*Ab Irato*": in a fit of rage.



9.1 KOMOREBI

AROMATIC FLORAL FRUITY

Mint Leaves, Reseda, Hazel Wood

Blackberries, Mimosa, Oakwood, Tonka

THE INSPIRATION

The vegetal world, air and light are the three leading principles that inspired Pierre GUILLAUME for this rework of the theme 09, floral aromatic.

THE PERFUME

The vegetal poetry of an armful of fresh leaves and plump berries. Its scent draws us into a romantic forest, the light of the sun filtering through the leaves of oak and hazel trees on a beautiful summer day.

THE NAME

Komorebi eloquently describes the light of the sun filtered through tree leaves.



10 AOMASSAI

BITTER AMBER WOODY

Coffee, Woods, Cashmeran

Orange, Vetiver, Tolu Balm

THE INSPIRATION

A bushfire, a Voodoo ceremony.

THE PERFUME

Oriental Flames - Hypnotic and Disorienting. All the ingredients are taken roasted, burnt or grilled to develop a dark and mysterious aspect and reflect a notion of "olfactory bitterness".

THE NAME

A-O-Massai for Amer (Bitter) Amber, of African inspiration.



10.1 BOUQUET MASSAI

FLORAL WOODY SPICY

Bergamot, Spicy Flowers, Coffee, Cashmeran

Spices, Peony, Magnolia, Karo-Karoundé

THE INSPIRATION

A flamboyant rework of *Aomassai*.

THE PERFUME

The bushfire of *Aomassai* gets brighter and solar with a bouquet of Peony, Magnolia and Karo-karounde. Tolu balm, cashmere wood and sandalwood create a velvety basenote.

THE NAME

Between a floral ritual and burning woods.



11.1 INDIAN WOOD

SPICY AROMATIC - WOODY

Pepper Mint, Nutmeg, Woods

Lemon, Cardamom, Coconut, Sandalwood

THE INSPIRATION

A new “spicy aromatic”, theme 11, sets in the land of the Maharadjahs.

THE PERFUME

Peppermint, nutmeg and cardamom fit in a hot and cold contrast evoking the moisture of the rainy season, pierced by the carnal vibration of a hint of coconut milk. Sandalwood, Vetiver and Moss compose a captivating woody trail.

THE NAME

Indian Wood guides us into the heart of an indian forest.



11.2 SPICEMATIC

SPICY AROMATIC - WOODY INCENSE

Spearmint, Saffron, Ginger, Frankincense, Siberian Pine

Red Cedar, Musk

THE INSPIRATION

Marble water, inspired by a molecular distillation of incense.

THE PERFUME

Driven by the spicy-aromatic vibe of saffron, fresh ginger and green mint, this “marble water” has the shine and hardness of rock. Its mineral and cold character, emanating from a molecular distillation of incense, intense, fusing and precise is tempered by the organic vibration of Red Cedar and the resinous heat of Siberian pine.

THE NAME

From the contraction of “Spicy” & “Aromatic”.



12 HYPERESSENCE MATALE

HESPERIDIC - AROMATIC WOODY LEATHERY

Bergamot, Matale Black Tea, Leather

Mint Leaves, Gaiaewood, Birchtree

THE INSPIRATION

The perfumer takes us on a trip to the heart of the Indian Ocean, with the world renowned Matale black tea of Sri Lanka.

THE PERFUME

Brought to a level of concentration of 30%, this Hyperessence only shares 8 compounds with the *Eau Rare*. The smoky wood hint stands out to enhance the chypre leather note.

THE NAME

From the province of Matale in Sri Lanka.



12.1 UN CRIME EXOTIQUE

SPICY AMBERY BLACK TEA

Elemi, Black Tea, Gingerbread

Cocoa, Benzoin, Amber

THE INSPIRATION

Pierre GUILLAUME first explored the theme of chypre tea in 2005, with "*Hyperessence Matale*", texturing it with citrus and leather accents. Twelve years later, he reworked this theme with "*Un Crime Exotique*" 12.1 where the chypre structure is adorned with spicy and gourmet notes.

THE PERFUME

"*Un Crime Exotique*" 12.1 plays with the unusual union of Elemi resin and Gingerbread, in the heart of a truculente farandole of flavors, mixing tea steamers, Ceylon cinnamon and star anise.

Mate Absolute and cocoa powder tint the Oceanian Sandalwood of a quaint exoticism...

THE NAME

Sin of gluttony in the land of rising sun...



13 BRÛLURE DE ROSE

AMBERY ROSE

Litchi, Rose, Amber

Raspberry, Rosewood, Sandalwood

THE INSPIRATION

A molten metallic version of an Ambery Rose.

THE PERFUME

A metallic rose, burning on the ambery base note.

THE NAME

A burning Rose, for all those who are adverse to Roses.



13.1 LA NYMPHE & LE POETE

FLORAL - FRESH SENSUAL

Rose-Tea, Orangerwood, Cistus

Citrus, Peach

THE INSPIRATION

Romanticism, Romantic Poetry of the 19th century. Nourishing their imagination, opposing feeling to reason, it becomes a cultural movement seeking through exoticism, mythology, irrationality, melancholy, and passions a means of escape and delight.

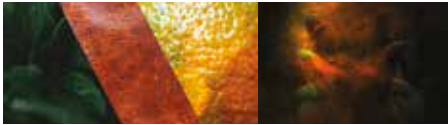
THE PERFUME

A Rose-Tea with accents of violet and spices.

The singularity of an original material: the absolute of tea rose leaves whose complex greenness responds to the amber warmth of the branches of Cistus.

THE NAME

An imaginary idyll between the nymph Erato and the German poet Novalis.



14.1 CUIR D'IRIS

WOODY SPICY

Cardamom, Iris Old Black, Leather

Bergamot, Patchouli, Cedar

THE INSPIRATION

"Iris dust" and leather.

THE PERFUME

An old Purebred powdered leather through sumptuous Old Black Iris with notes of grape and dark chocolate. This *"iris dust"* and leather, rising in an amber vapor has become a classic of the leather family since its creation in 2007, demonstrating the unique *"Savoir-Faire"* of Maison PIERRE GUILLAUME PARIS.

THE NAME

The leathery facets of a black iris...



14.2 COSTUME LIQUIDE

SPICY FLORAL

Peppery Iris, Peony, Basil

Violet Leaves, Haitian Vetiver

THE INSPIRATION

Summed up in its code name:
"Iris Super-Ombre".

THE PERFUME

Costume Liquide is a direct and precise fragrance where the iris is literally shaded by a "stormy" accord of pepper and peony distilling a sober elegance and an enveloping preciousness. Basil and Violet Leaves bring freshness and positivity to a superb quality of Haitian Vetiver, giving the ensemble a timeless classic finish.

THE NAME

A fragrance designed to bring the confidence, rightness and elegance of a tailored suit...



15.1 HAPYANG

FLORAL ALDEHYDIC EXOTIC

Cloud of Powder & Aldehydes, Magnolia, Ylang-Ylang

Bergamot, Pearwood, Benzoin, Vanilla

THE INSPIRATION

It was while discovering by chance a series of photographs depicting a dancer in a cloud of powder (by Jeffrey Vanhoutte) that the idea came to me: aldehydes should twirl in a huge cloud of powder!

THE PERFUME

Hapyang is an explosion of powder and floral sparkles, with an endless trail... Aldehydes make magnolia and ylang-ylang flowers sparkle in a cloud of powder, enlivened by the sweet, exotic notes of this floral heart. Pearwood, benzoin and vanilla rise in a delicate oriental breath, enveloping the skin like a precious veil of shimmering silk.

THE NAME

HAPPY+YLANG.



16 JARDINS DE KERYLOS

GREEN WOODY - FRUITY

Green fig, Sycamore Tree

White Peach, Tuberose

THE INSPIRATION

A natural and luminous aesthetic.

THE PERFUME

The minimalist elegance of a blend of Fresh Figs and Sycamore Wood borne on the grassy freshness of a shaded garden.

THE NAME

From the Kerylos villa and gardens in Beaulieu-sur-Mer, born from a collaboration between the archaeologist Théodore Reinach and the architect Emmanuel Pontremoli.



16.1 BOIS NAUFRAGÉ

WOODY FOUGERE

Salt Flower, Figtree

Mint, Vetiver, Driftwood

THE INSPIRATION

Lucien Clergue's photograph "Nu au bois flotté" (Naked in Driftwood).

THE PERFUME

A woody fougere in which the Egyptian Figtree is dressed with the minerality of Salt Crystals and Ambergris, on a fractioned Vetiver base.

THE NAME

An Egyptian Figtree treated like Driftwood.

17 TUBÉREUSE COUTURE

FLORAL

Kalamanzi, Tuberose, Sugar

Citrus, Neroli, Benzoin

THE INSPIRATION

Bright, incisive and luxurious, *Tubéreuse Couture* exacerbates the flower's five natural facets through five complex accords: green, camphorated, solar, animalic and lactic.

THE PERFUME

A heady radiant floral nectar.

THE NAME

The Tuberose, alongside the Gardenia, is without a doubt the most "Couture" of flowers with its natural complexity that makes it a source of unlimited inspiration for any perfumer.



18 CADJMÉRÉ

WOODY AMBERY - CREAMY

Rosewood, Sandalwood, Vanilla

Tangerine, Cypress, Ambrette Seed

THE INSPIRATION

Sandalwood, a creamy harmony, caressing and comforting like kashmir.

THE PERFUME

Pierre GUILLAUME Sandalwood with an oriental flavour, textured and shaped to evoke the caressing and delicate qualities of kashmir.

THE NAME

Cadjméré comes from “*Cachemire*” and “*Mère*” (mother in french): the principal element of the fragrance, sandalwood, is often qualified as “*maternal wood*” for its creamy, warm and comforting nature.



18.1 PRALINÉ DE SANTAL

SANDALWOOD – WOODY POWDERY

Sandalwood, Hazelnut

Heliotrope, Cedar, Fleur de Sel

THE INSPIRATION

In 2009, at the height of the perfumer's “*Dark Gourmand*” period, a fan challenged the perfumer during a joyful and passionate in-store customer-creator meeting: “*Make us a sandalwood-hazelnut... but nothing sweet!*”

The latter, amused by the interesting association, simply replied: “*A subject for an essay... I dare you!*”

THE PERFUME

A Sandalwood that is both monolithic in its proportions and ethereal in its evolution, tenderly powdery and enhanced by just-roasted hazelnut. In the heart, the perfumer uses the powdery strength and diffusive power of heliotrope to energize and space out the notes: the accord gains in volume and lightness, sandalwood is omnipresent without collapsing. In the base notes, Cedarwood stiffens the sandalwood and gives it verticality, while Fleur de Sel gives it a driftwood air and definitively neutralizes any hint of sweetness.

THE NAME

Praliné (not praline) de Santal, suggesting the harmony of hazelnut and sandalwood in a very French... and very PG way.



19 LOUANGES PROFANES

FLORAL AMBER - BALMY

Neroli, Incense, Benzoin

White Lily, Patchouli, Gaiac Wood

THE INSPIRATION

"A night of love with an angel..."

THE PERFUME

An immaculate, luminous and sensual Floral Amber built on an accord of tunisian neroli and benzoin.

THE NAME

A sensual olfactory prayer written in ink of six religious symbolisms. In the Renaissance *"profane praise"* meant the cry of female orgasm.



19.1 NÉROLI AD ASTRA

FLORAL VEGETAL FRESH

Neroli, Agave flower, Pear

Tangerine, Jasmine, Geranium, Musk

THE INSPIRATION

Nine year after the creation of *Louanges profanes 19*, Pierre GUILLAUME reworks the theme of orange blossom, in a new fresh and musky interpretation.

THE PERFUME

Lifting and precise, *Néroli ad astra 19.1* is a white floral, luminous and aerial, in which the Neroli from Marocco and the Agave Flower from Mexico seem to have been harvested in the azure fields of an heavenly garden.

THE NAME

Ad astra (latin expression): to the stars...



20 L'EAU GUERRIÈRE

WOODY FRESH

Cinchona Bark, Incense, Aloe Wood

Gin, Cedar

THE INSPIRATION

The smoke of burning Incense, Laurel branches and Resins during the ancient Oracle ritual.

THE PERFUME

Green, fresh incense, an eau infused with dry wood.

THE NAME

A woody, modern and raw fragrance... created from the duality of citrus oils and truly primitive notes.



21 FELANILLA

SPICY AMBER

Saffron, Vanilla Absolute, Iris Absolute

Cardamom, Amber, Musk

THE INSPIRATION

Vanilla for grown-ups: neither girly nor for eating. Precious, generous, racy. Three absolutes in a softly spiced ambery nectar, carried by fruity wood and burning amber.

THE PERFUME

A Feline Vanilla with Iris and Saffron.

THE NAME

From the contraction of "Feline" and "Vanilla".



21.1 ORCHIDIVY

GREEN VANILLA – FLORAL AND FRUITY

Ivy, Gardenia

Raspberry, Hay, Tonka, Absolute Vanilla SFE

THE INSPIRATION

The fragrance of a sylvan divinity, an enchantress, a mutant, mutinous creature living in symbiosis with Nature and plants. Its trail is supernatural: green vanilla hybridized with ivy, tomato leaves and gardenia precede a heart of hay, tonka bean absolute and raspberry rooted in the noblest of earths: a massive, creamy vanilla absolute, stripped of its animalic, smoky and phenolic notes.

THE PERFUME

Orchidivy is an explosion of plant life. An explosion of vivid green notes of ivy, tomato leaves and gardenia precede a heart of hay, tonka bean absolute and raspberry rooted in the noblest of earths: a massive, creamy vanilla absolute, stripped of its animalic, smoky and phenolic notes.

THE NAME

Vanilla is a spice from the Orchidaceae family, and *Orchidivy* is a suitcase name born from the contraction of "Orchid Vanilla" and "Ivy".



22 DJHENNÉ

AROMATIC WOODY

Lavender, Seringa, Myrrh

Mint, Cocoa Beans, Fig Leaves, Leather

THE INSPIRATION

The scorching sun and the olfactive experience of fern offering an alliance of fresh aromatic notes wrapped in a warming sheath of lightleather.

THE PERFUME

A Wheat and Myrrh light Leather sheath, protecting the delicate Mint leaves and intoxicating whiteness of the Seringats from the shroud of burning sand..

THE NAME

Djhenné, a city in the sand, warm shades.



22.1 TIGRE D'EAU

FOUGÈRE - BALMY AMBERY

Pink Pepper, Coconut Water, Pink Grapefruit

Chlorophyll, Tonka Bean, Salted Caramel

THE INSPIRATION

Vegetal bite and balmy caress...
The olfactory allegory of a white tiger
lying in fresh grass.

THE PERFUME

The biting freshness of coconut water infused
with grapefruit zest and pink pepper is
matched by the silky, enveloping warmth of a
heart of fern with a twist of chlorophyll and
salted caramel.

THE NAME

A powerful, supple and biting water inspired by
the symbolism of the year of the Tiger in the
Chinese calendar. Sensitive and intuitive, the
Water Tiger knows how to pull in its claws and
act with flexibility and wisdom.



23.1 JASMAGONDA

WOODY POWDERY JASMINE

Green Notes, Indian Jasmine, Himalayan Cedar

Vetiver, Tonka

THE INSPIRATION

With *Jasmagonda*, I wanted to change my
point of view... and of olfaction. Flying over the
canopy like a bird, brushing over nature
to capture its essence.

THE PERFUME

A jasmine wood...seen from the sky.
Jasmagonda: the story of a verdant,
variegated India seen from the sky,
through a silky, powdery woody floral elixir
blending Indian jasmine, Himalayan cedar
wood and Tonka bean.

THE NAME

The contraction of Jasmin
and the beaches of Agonda.



25 INDOCHINE

SOFT SPICY

Kampot Pepper, Tanakha, Benzoin

Cardamom, Honey, Incense, Amber

THE INSPIRATION

"1920: a sepia-toned cruise down the mighty Mekong river, a kaleidoscope of ephemeral dawns shrouded in mist and glorious days of radiant sunshine. Slow down, appreciate the dampness and close your eyes. Beyond the riverbanks lie our dreams of Indochina..."

THE PERFUME

A luminous, smooth and airy orchestration that nely reproduces each and every facet of unprocessed balsam.

Wood, Fresh Spice, Sweet Amber.

THE NAME

A sepia-toned cruise down the mighty Mekong River.



26 ISPARTA

NEO CHYPRE

Red Fruits, Isparta Rose, Patchouli

Calamus, Ambroxan

THE INSPIRATION

"The province of Isparta in Turkey is famed for its rose oil, obtained from a variety called 'Isparta Summer Roses', which grows profusely in gardens and terraced fields on the soft mountain slopes. The roses are picked early in the morning when they are half-open and their fragrance is the strongest... intense, rich, slightly spicy."

THE PERFUME

Behind wisps of burning resins, Isparta hides a woody rose embraced by a velvety animalic accord of red fruit, benzoin, calamus and ambroxan...

THE NAME

Isparta Summer Roses.



27 LIMANAKIA

MINERAL & ANIMALIC

Rocky Beach Accord, Salty Patchouli, Labdanum

White Flower, Helichrysum

THE INSPIRATION

Pierre GUILLAUME wanted to evoke the animality of skins rubbing against each other and the scent of rock rose bushes, by blending Pierre GUILLAUME it with the mineral smell of sea breezes caressing burning rock.

THE PERFUME

A salty patchouli tinged with the vegetal animality of Labdanum Ambrain.

THE NAME

On the coast of the Aegean Sea, a series of burning, rocky beaches and mineral alcoves edged in rock rose bushes - the perfect place for trysts... *Limanakia*.



28 PEAU D'AMBRE

MEDITERRANEAN AMBER

Resins, Amber, Leather

Incense, Fir Balsam, Opopanax, Benzoin

THE INSPIRATION

Imagine for a moment to observe, of the Gulf of Corinth, from the pine forest or the maquis at sunset, the ballet of boats laden with vases of perfumed oils and odorous gums, their leather bottles struggling to contain the scent of resins and balms of ancient potions.

THE PERFUME

Mediterranean Amber. Frankincense, Fir balsam, Opopanax and Benzoin form the resinous quadriga leading amber and leather to the mineral banks of a Mediterranean twilight.

THE NAME

A skin-deep amber.



29 ITABAIA

HESPERIDIC WARMNESS

Citrus, Maracuja, Jurema Flower, Hibiscus Wood

Pineapple Leaves, Vanilla, Hemp

THE INSPIRATION

For this new Opus, inaugurating the theme 29 "Hesperimental" Pierre GUILLAUME was inspired by the strength and energy associated with Capoeira, this Afro-Brazilian art combining dance and wrestling. On the Brazilian beach of Itacaré, dance warriors perform an acrobatic and solar ballet to the rhythm of berimbau and feverish songs, dazzling the spectator with power, grace and harmony.

THE PERFUME

Compose an original citrus fragrance, which without being an Eau de Cologne would retain its accuracy, versatility and immediate desire to be worn. Keep an invigorating top note, around citrus fruits and herbs. Unfold an elegant, unisex floral heart and place the whole on a musky base giving it a trail and persistence.

THE NAME

Invented by the perfumer, of an undetermined kind. An elegant and mysterious word, it impresses with exotic sounds evoking Brazil, dance, a divinity...



30 ALPHAORA

MOSSY FLORAL - AMBERY

Blood Orange, Albizia Blossom, Hinoki Sap, Assam Moss

Amber, Musk

THE INSPIRATION

"An imaginary tree moss as complex as it is deep, revealing an amber warmth between sage, dried fruit and blond tobacco. The sweet sap of Hinoki Wood, the strange floral vapor of an albizia under the sun crowned by the brightness of the blood orange".

THE PERFUME

The structure of *Alphaora* is modelled on the architecture of *Sucre d'èbène* (2010): a floral heart dominated by an overdose of Hedione confers diffusion and volume to a woody-sweet, refreshed with citrus and gently spicy notes. While *Sucre d'èbène* rests on a massive base of musk infused with balsamic notes, *Alphaora* blossoms in a vapor of ambregis, acting like a magnifying glass on an imaginary tree moss accord with hints of dried fruit and blond tobacco.

THE NAME

A portmanteau word, invented, in the purest PG style. First work (*alpha*) on the theme "Glam'moss", the quest for a perfumeaura (*ora*), tenacious and ultra diffusing, where the Assam moss matches the blood orange (*ora*).



31 TONKA BODYKON

SWEET AMBER

Ambery Rum, Tonka Bean, Apple, Honey

Vanilla, Pistachio, Benzoin

THE INSPIRATION

An aphrodisiac, "skin-tight", shimmering tonka...

The word "bodycon" may not sound very flattering, but the concept behind it is. The term bodycon is actually a contraction of the words 'body' and 'conscious', which means body-conscious. *Tonka Bodykon* is an aphrodisiac, "skin-tight", shimmering tonka that follows the body's curves as closely as possible to highlight them.

THE PERFUME

Tonka Bodykon is a soft amber composition centred on the tonka bean. Inspired by the chromatic palette of a sunset setting the horizon, this fragrance is a "tonka liqueur" infused with balsam and fruity notes. Intoxicating and fiery, we imagine it shimmering on the body of a deity performing a fire dance, billowing its veils in the evening light.

THE NAME

TONKA BODYKON, the term "bodycon" written with the "k" of tonka.



31.1 L'AIR & L'ÉROS

TONKA - FLORAL - BALSAM AMBER

Lilac, Tonka Beans, White Cocoa

Balsamic warmth, Almond, Tobacco notes, Coumarin

THE INSPIRATION

Air & Eros, tonka particles carried by a fresh air current, like a light breeze charged with the scent of lilacs... if the wind was the best of lovers?

THE PERFUME

L'Air & L'Eros is a balmy floral, evoking the first warm spring breeze that makes bare skin quiver with its caress. This breath of lilac, whose balsamic and spicy facets resonate with particles of tonka bean, blossoms into the soft ambery warmth of white cocoa extract.

THE NAME

A balmy floral shiver, the warm wind of the first beautiful days on bare skin.





PIERRE GUILLAUME CRUISE

A TASTE FOR TRAVEL

Through the theme of travel, these creations evoke the wide open spaces, wild nature and elsewhere far away. The Cruise Collection is not a catalog of iodized odors... **It is about sea, distant islands, jungle but especially of movement...** The bottle “*cruise*”, takes the lines of the bottle emblem of the House with a double translucent blue ceramic skin injected inside the glass.





ENTRE CIEL ET MER

WOODY FRESH

Sandalwood and Aquatic Notes

Algae Absolute, Lavander, White Thyme

A MARINE POEM COMPOSED WAVE AFTER WAVE...

Entre ciel et mer ("Between sky and sea") tells a story of etesian winds, azure skies and flying over seascapes at top speed... Icy, soaring and powerful, the first whiff feels as though it had been sculpted out of the Meltem - the north wind that blows over the Aegean Sea, with notes of crumpled, water-splashed leaves and the fruity-aromatic nuances of a lavender, pear and white thyme accord.



LONG COURRIER

SALTY VANILLA AMBER

Cocoa Powder, Salty Vanilla, Elemi

Orange, Patchouli, Cedar

A SWEET-AND-SALTY WATER BROUGHT BACK FROM A BEACH ON THE OTHER SIDE OF THE WORLD

With *Long Courier*, ("Long-distance flight"), a solar amber built around a core of salty vanilla, the perfumer evokes faraway destinations, beaches on the other side of the world, lazy days gorged with sea spray and the delicious scent of suntan lotion...



LUNE D'EAU

ICY WOODY INFUSION

Mineral Accord, Icy water, Amyris

Ginger, Juniper, Musk

ICY INFUSION OF AMYRIS WOOD

“Lune d'eau” is a woody fern. Its name refers to the reflection of the early morning winter moon in the lake near which the perfumer resides.



MÉTAL HURLANT

WOODY MUSK

Musk, Leather & Gazoline

Jasmine, Sage, Amber

MUSK, LEATHER AND GASOLINE

A motorcycle trip across the USA on the legendary Route 66. With *Métal Hurlant* (“Howling Metal”), ride a Harley at full throttle on an asphalt ribbon.



MOJITO CHYPRE

CHYPRE AROMATIC

Mojito Strawberry, Patchouli, Vanilla

Mint, Lemon, Vetiver, Labdanum, Moss

**A BEACH PARTY...
FROM IBIZA TO MIAMI**

Pierre GUILLAUME revisits a historical fragrance family by boldly redrawing its outlines to offer a modern, hybrid composition.



PARIS FIDJI

GOURMAND FRESHNESS

Citrus, Rhum, Sandalwood

Orange, Grapefruit, Patchouli

NEW ARCHIPELAGO, NEW STOPOVER

Savoury stopover in the Fidji archipelago... A woody and savoury eau, in which the Sandalwood from Fidji and the dark Rum meet the tasty freshness of an Orange and Grapefruit juice.



RIVAGES NOIRS

SPICY AROMATIC

Spices, Whisky, Cypress

Citrus, Ozonic Notes, Cedar

A MEDITERRANEAN CYPRESS, THE SEA, THE NIGHT

With "*Rivages Noirs*", a spicy-woody composition, Pierre GUILLAUME invites us to sip single malt whisky on the deck of a boat anchored somewhere off the Mediterranean coastline, rocked by the waves of a quiet summer night.



SAMBAKA

WOODY WARM

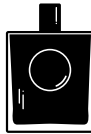
Coffee Santos, Orange, Coffee Wood

Cardamom, Sandalwood

A RHYTHMIC SCENT OF BRAZIL

Composed of the sounds of the words Samba and Café, this invented name, directly announces the theme of work of this new stopover: Brazil. *Sambaka* is an Oriental Woody based on a CO₂ extract of "Café Santos" from Brazil. Super realistic this material offering all the balsamic nuances of a freshly roasted coffee explodes in the lead bringing in its wake the spicy scents of cardamom and green ginger. The Orange Pera from Brazil brings its greezy freshness to a softly animalic Coffeewood accord.



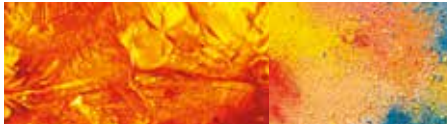


PIERRE GUILLAUME BLACK COLLECTION

OLFACTORY PHOTOGRAPHS

A collection of eaux de parfums with architecture evoking figurative **olfactory captures. The composition of these scented photographs is built around innovative ingredients, derived from biotechnologies.** The bottle “*shadow*”, takes the lines of the bottle emblem of the House with a double black ceramic skin injected inside the glass.





AMBRE CÉRULÉEN

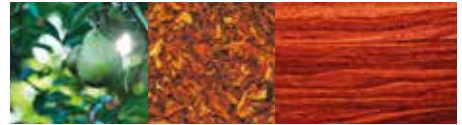
AMBER

Opoponax, Tonka Beans and Sandalwood

Bergamot, Patchouli, Vanilla

AN AMBER TINTED WITH AZURE...

A powdery balm for an airy amber...
Opoponax, Tonka beans and Sandalwood
delicately lit up by the precious essence of
Moroccan Organic Verbena,
orris and cinnamon.



ANIMAL MONDAIN

WOODY POWDERY ANIMALIC

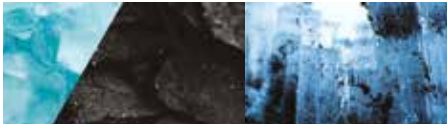
Pear Tree Leaves, Turkish Tobacco, Mahogany Wood

Musk, Amber

**THE 30'S AND MODERNISM,
FROM MARLENE DIETRICH
TO ROBERT MALLET-STEVENS**

*"Between the spicy ardor of Cozé and the
balmy and liquorish opulence of Liqueur
Charnelle, Animal Mondain interposes itself as
a new Tobacco in my production. Stripped of all
artifice, it is a gender free olfactory creation
inspired by the modernist architecture of a
Mallet-Stevens smoking room. The bursts of
laughter of a social society happy to feast
there splits the tobacco volutes that stretch
gently on the leather armchairs and along the
pear tree and mahogany woodwork..."*

Pierre GUILLAUME



AQAYSOS

WOODY SPICY FRUITY

Coriander, Sansho Berries, Cocoa Beans

Musk, Woods, Amber

A CRYSTAL WOOD...

Aqaysos is a versatile and elusive olfactory proposal, inspired by the incisive, shiny and brilliant character of crystal.

Pierre GUILLAUME plays resonances between the ingredients, to distort our perception as a prism diffracts the light...

Between fluidity, transparency and sensorial impact, Aqaysos is an explosion of rising and fruity notes, on the rhythmic pulsations of a woody vibration.



FAREB

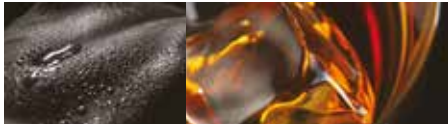
SPICY LEATHERY

Ginseng, Helichrysum, Leather

Spices, Rosemary, Warm Sand

FRESH, AROMATIC, RESINOUS, SPICY AND WOODY

A primitive perfume, a taut note drawing on raw materials in their pure, natural state. The double accent of "Bois d'Immortelle" with hints of leather, spices and warm sand, and Ginseng absolute for an unusually impassioned, sombre and strong base.



LIQUEUR CHARNELLE

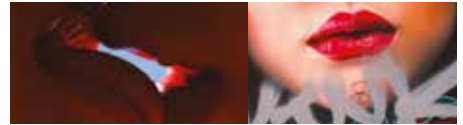
WOODY SPICY

Spices, Cognac Accord, Blond tobacco

Raspberries, Gaïac Wood, Powdery woods

A VOLUPTUOUS COGNAC BOUQUET...

Inspired by this cornucopia of fragrances, *Liqueur Charnelle* is a voluptuous, deeply sensual accord in which the perfumer offers a "cognac bouquet" of spices, blond tobacco and powdery woods. Suave and vibrant pink pepper, elemi and black pepper enhance tonka bean and raspberry notes...



MAD ABOUT YOU

POWDERY WOODY GOURMAND

Griotte, Liquorice, Bois de violette

Orris, Patchouli, Black Tea

NEO ROMANTICISM...

Composed in 2017 for the exhibition "The Kiss" Gallery Christiane Valley, in resonance with the works of Anthony SQUIZZATO and the news of Cécile COULON. Pierre GUILLAUME presented us a Woody Gourmand Floral fragrance crystallizing not without humor and distance the concept of Neo-Romanticism at the time of the social networks.

After a burst of regressive gourmet chords and powdery floral notes, *Mad About You* develops a signed and catchy trail, fueled by the "leather-powdery" sophistication of a unique duet of Bois de Violette and Black Tea Absolute.



MANGUIER MÉTISSE

FLORAL MUSK SILKY

Mango Bark and Frangipani Flower, Black Tea

Rose, Patchouli, Musk

A SKIN CARESSING EXOTISM...

A woody metaphor, a mild yet penetrating floral with a hint of fresh Mango extract...

The double accent of Mango bark extract, powdery, aromatic and fruity, and a few leaves of black tea, warmed by the exotic sweetness of Frangipani flowers.



MÉCANIQUE DU DÉSIR

WOODY FLORAL MUSK

Mandarin, Gaiaic Wood, Amber

Orangewood, Violette leather

LUXURY GREASE FOR SENSUAL MACHINES

As a classic car collector, my father taught me the beauty of vintage engines as a teenager, while I watched him restore his Austin Healeys, Jaguars and Mercedes.

We spent long winter Sundays in his shop, sinking our hands into the entrails of his sculptures on wheels. The smell of dirty engine grease has always both attracted and repelled me. Though it was associated with happy moments in my life, this "engine sweat", with its pungent smells of tar, petrol and oil, was also disturbing. Many years later, as I was reading Jacques Lacarrière's book *'Ce bel et vivace aujourd'hui'*, I finally understood the hidden poetry of this "Black Mucus" and decided use it as a theme for my work. My "cambouis" (dirty engine grease) will have the warmth of amber and animalic musks, tinged with the strange blackness of a guaic wood and violet leaf accord. The sulfurous notes of cassis bud mixed with aldehydes will trace metallic outlines, while mandarin essential oil will add the gleam of chrome.

Pierre GUILLAUME



MONSIEUR

WOODY

Patchouli, Cedar, Vetiver, Sandalwood, Poplar, Oakmoss

Incense Wood, Papyrus, Amber

THE ULTRAWOODY...

It is in the heart of “Bois Noirs”, where torrents and waterfalls from Auvergne’s mountains carry along scents of moss, bark, wood, earth, humus and stone, that the composer drew inspiration for this perfume.

A harmonious blend of eight woody notes entwined with crushed leaves splashed by the mineral freshness of water spurting out of the rock, “Monsieur” is a rich, powerful fragrance that is both complex and vibrant with an extremely organic sensuality.

Essences of Patchouli, Cedarwood, Vetiver and Sandalwood, Absolute of Poplar, Oakmoss, Incense Wood and Papyrus.



MYRRHIAD

AMBER

Myrrh, Black Tea, Vanilla

Bergamot, Liquorice, Opopanax

A MILLENNIAL STORY...

The story of myrrh is as old as that of Perfume.

The Egyptians have known about it for four millennia and used it as one of the components of Kyphi, the sacred incense of their Kings.

Warm and sensual with notes of amber and balsam, *Myrrhiad* is an oriental perfume that celebrates all the facets of this ancestral resin, enhanced in this fragrance by the leathery, animal dimension of Black Tea Absolute interlaced with a cocktail of different vanillas and liquorice.



POUDRE DE RIZ

AMBERY POWDERY

"Poudre de Riz", Monoï and Vanilla Pods

Cinnamon, Rose, Amber, Musk

AN AMBERY EMBRACE...

"The air in the closed room was heavy with a mixture of odours: soap, face powder, the pungent scent of cologne".

Henri Barbusse, *The Inferno*, 1908

This is the phrase from a novel by Henri Barbusse that inspired "Poudre de Riz", a fragrance for a deliciously amber embrace: the old-fashioned charm of an accord of "Poudre de Riz" tinged with Rose Petals and the timeless sensuality of a Monoï infused with Vanilla Pods.



SUCRE D'ÉBÈNE

FLORAL MUSK - SUAVE WOODY

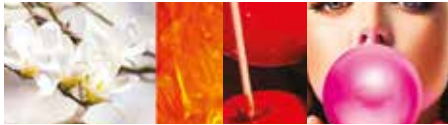
Brown Sugar, Witch Hazel and Benzoin

Bergamot, Vanilla, Cedar

A MAT AND SWEET WOOD...

The gentle caress of sweet trade winds...

Musky infusion of brown sugar, witch hazel, orange blossom, vanilla and benzoin.



SUPERLADY

LIVELY GREEN FLORAL

Magnolia, Apple candy, White Amber

Rose, Jasmine, Vanilla, Musk

**A VIBRANT ELIXIR FOR EVERY
SUPERLADY...**

"A vibrant floral, Superlady is a magic potion for the wonder women of everyday life."
Pierre GUILLAUME

Superlady, a lively, delectable green floral blending magnolia and candy apple with the long-lasting radiance of a super-powerful white amber. An energy shot in the heart of winter...

A crunchy, tasty candy apple is revealed in the heart notes, balanced by the fruit's tart freshness. Tasty but not sugary, *Superlady's* green, fruity, gourmand accord stays crisp and lively.



VOHINA

FRESH FLORAL AMBER

Peach Tree Blossoms, Lavender Honey, Blond Hay

Grapevine Flower, Rosemary, Musk

A FLORAL VELVET...

A sunny afternoon in the fields, velvety and floral with peach tree blossom and lavender honey resting on golden hay.



ORCHIDIVY
21.1

PIERRE GUILLAUME PARIS





PIERRE GUILLAUME WHITE COLLECTION HELIO-INSPIRED FRAGRANCES

A collection of eaux de parfums **inspired by the light, the sun and well-being**. The bottle “*Shadow*”, takes the lines of the bottle emblem of the House with a double white ceramic skin injected inside the glass.





DIALOGUE WITH VENUS

FLORAL VANILLA MUSK & SUNNY

Vanilla, Sea Spray, Ylang-ylang

Peach, Sandalwood, White Musk

THE INSPIRATION

In 1977, the year I was born, Helmut Newton immortalised Charlotte Rampling in a series of photos entitled “*Venus in Fur*”. A feline and supersensual woman embodies sexual power: emancipated, she takes possession of her body and asserts her desires. Echoing the sexual revolution and its bohemian patchouli, the perfumery of the 70s distils a chic eroticism, all in suggestion, where heady white flowers pierced by green, powdery and aldehydic notes anchor the fragrances of this decade in a glamorous sophistication.

THE PERFUME

“*Dialogue with Venus*” opens with a white floral accord evoking the luxurious and exacerbated femininity of the 70’s, while its fruity, silky and solar vanilla is treated according to the codes of the House of Pierre Guillaume Paris. Subtle exotic sprays flow through this floral melody like a wind of freedom, suggesting a mischievous and sexy “*je-ne-sais-quoi*”, an effortless chic.



HELIOFLORA

WOODY AROMATIC FRUITY

Rhubarb, Buddleia, Red Sandalwood

Apricot, Rosemary, Musk

A FRUIT & HERB SORBET

Granita, called “*granité*” in French, also called “*granita siciliana*” in Italian, is a refreshing semi-frozen dish typical of Sicily. It comes in an intermediate consistency between that of a sherbet and crushed ice. Its current manufacture involves the partial freezing of a constantly stirred mixture of water, ice and fruit or other tasty ingredient... *Helioflora* is a woody floral built like a “*granita*” of flowers, fruits, wood and herbs.

A sorbet of rhubarb, apricot and basil brings a particular flavor to the floral scent of Buddleia (Butterfly Tree) and the soft woody heat of Red Sandalwood.



INTIME.EXTIME

FLORAL AMBER - FRESH & POWDERY

White Tea, Iris Powder, Incense

Vanilla, Itauba Wood

THE NAME

intime Adjective and noun.

LITERARY Which corresponds to the deepest reality, the essence.

extime Adjective and noun.

Relating to the part of intimacy which is voluntarily made public (as opposed to intimate): An extime diary.

THE PERFUME

Intime.Exttime, when a perfume says everything about you... *Intime.Exttime* is a powdery, floral and amber skin adornment evoking the movement of the pages of a diary expressed by a Iris Powder accord, Incense and Vanilla. Itauba Wood, refreshed with a dash of White Tea, infuses its exotic complexity.

A MATERIAL

Itauba Wood, when freshly cut, gives off a complex and singular fragrance. A key note of the *Intime.Exttime* fragrance, it brings a depth and preciousness linked to the multitude of its exotic wood nuances.



OSHISO

SPICY LUMINOUS - WOODY & POWDERY

Bergamot, Shiso Leaves

Apple Blossoms, Heliotrope Wood

THE INSPIRATION

Taking up the architecture of the Best Seller Agayzos, Pierre GUILLAUME executes a spicy woody crystalline note, revealing under a biting freshness a powdery and enveloping nature... a "*shiso flake*". True to the DNA of Pierre GUILLAUME's White Collection, "*Oshiso*" is an immediately captivating genderless composition illuminated by a trio of Bergamot, Apple Blossom and Heliotrope Wood. The exotic scent of Shiso leaves enhances the note with a singular spicy freshness. Unexpected and highly desirable.

A MATERIAL

Shiso is the Japanese name for Perilla, an aromatic plant cultivated in Asia since ancient times and in Japan since the 3rd century. The fragrance of Shiso essence is powerful and complex: green and powdery notes close to mimosa crossed by a spicy wave reminiscent of cinnamon in a halo of mentholated freshness.

THE NAME

The word Shiso preceded by the letter "O" because its sound evokes "eau" (water), because it is the first letter of the word "ode" and because its shape evokes a flake.



SUNSUALITY

A SILK OF CITRUS

Kumquat, Ginger, Creamy Sandalwood

Pink Pepper, Lemon Tree Blossoms

A SILK OF CITRUS

A particularly silky fragrance, where Pierre GUILLAUME transformed the citrus acidity into a scented caress.

The Kumquat-Santal accord seems infused with sunlight and develops on the skin the charms of a melting cream, soft and fresh.



SWIM/SX

SENSUAL AQUATIC

Rosewood, Indian Hemp, Okoume, Musk

Ylang-Ylang, Amber

AQUATIC & SENSUAL...

It kept his code name that sums it up so well.

SWIM/SX (for SPORT SEXY) evokes a sensual after-sun that tells us about a man or a woman after a sea bath... Its salty and desirable skin.

Okoume wood and musks warm the floral-fresh-solar accord of ylang-ylang, Pacific algae and rosewood, while a hint of Indian hemp soils the composition of a slight animalic dimension.







PIERRE GUILLAUME CONFIDENTIAL ANOTHER COLLECTION

With “*PIERRE GUILLAUME CONFIDENTIAL*”, the perfumer invites us into **an intimate and dreamlike world**, where the art of perfume is shaped through **modern** and **urban universes** imbued with **surrealism** or **exoticism**. All of PIERRE GUILLAUME CONFIDENTIAL's **poetry** is expressed in flasks clad in gold and graphite available in a very limited network of partner perfumeries.





A UNE MADONE

WOODY ANIMALIC VANILLA

Cardamom, Uganda Vanilla, Gaiac Milk Accord,

Animalic Sandalwood

Castoreum, Civet, Myrrh, Styrax, Gurjum

A MUSE OF CONTRADICTION

Grown in the volcanic hills of Uganda, with two rainy seasons and two harvests in January and mainly in July, Uganda vanilla is a *Planifolia*, broad and flat with a matte colour developing lively facets, notes of leather, fruity cocoa and peated single malt. A tomboy!

Cardamom and Sandalwood naturally underline the greedy and sensual curves of the vanilla pods, while Castoreum, Civet, Myrrh, Styrax, Gaiac and Gurjum increase their magnetism tenfold.



ANTI-BLUES

WOODY SPICY

Incense, Cocoa, Vetiver

Saffron, Amyris, Hay, Vanilla, Tobacco

DARK CHOCOLATE AND INCENSE

Through a vapor of Incense mixed with Vetiver, the woody bitterness of Cocoa Wood, Saffron and Amyris rises.

Anti-Blues deploys its greedy and dark nature by stretching its olfactory spectrum from the smell of Hay and Dark Chocolate to the animal nuances of a Vanilla hemmed with Leather and Tobacco.



LA NUIT DE L'ORCHIDÉE

FLORAL AMBER - LEATHERY

Spices, Vanilla Orchid, Amyris, Leather

Pink Pepper, Styrag, Incense

A LIQUID LEATHER

Witch flower, with a fruit similar to a leather sheath, the Vanilla Orchid is a sinner containing a sensory storm.

Pierre GUILLAUME offers to the skin the vertigo of a liquid leather: the scent of black pods struck by lightning on a stormy night.



NOIR OKOUMÉ

WOODY SMOKY POWDERY

Loban, Oolong, Myrrh

Sandalwood, Orris

HEART OF WOOD

Noir Okoumé tells us about the Wood-King of the Equatorial Forests and Kandéa Resin of Gabon, evoked through an accord of Loban, Oolong leaves, Myrrh, Sandalwood and Iris.





PIERRE GUILLAUME CONTEMPLATION

HAUTE PERFUMERY

The “*PIERRE GUILLAUME CONTEMPLATION*” collection is **a selection of new or original olfactory works from the archives of the PIERRE GUILLAUME PARIS Creation Studio**. These “*Creations in the Absolute*”, produced in micro-series and in ultra-restricted distribution, **represent the unbridled quintessence of PG’s Savoir-Faire** applied to exceptional ingredients... **our proposal of Haute Perfumery**.





AU ROYAUME DES FEMMES

AMBER FLORAL – ANIMALIC

Peppery Rose, Tonka Bean

Animalized Benzoin

**TRIBAL WARRIOR
AND DISCO DIVA...**

On the shores of Lake Lugu, on the edge of the Himalayas, the country of the Mosuo is known as the kingdom of women. This people of ancient nomads is one of the last matriarchal societies on the planet: all the privileges and powers belong to women.

“Au royaume des femmes” is a peppery rose and tonka bean set on a bed of animalized benzoin... a hybrid between tribal warrior and disco diva, my olfactory allegory of female empowerment.



AU-DELÀ DU NOIR

WOODY – FRUITY ANIMALIC

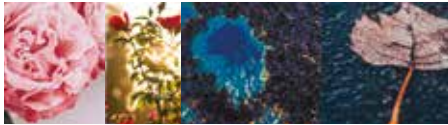
Davana, Blackcurrant bud, Ardent spices

Kyara wood, Animalic notes

**A BLACK WAVE WITH
RED REFLECTIONS...**

A chimerical hybrid between the bouquet of a mythical red wine and an incense of oud.

Among the great vintages of the *“Côte de Nuits”*, there is one whose bouquet impregnated my memory for ever... In this creation, the reminiscences of this exceptional black wave with red reflections match the animal incandescence of Kyara Wood, beyond black.



BAGATELLE ROMA

FLORAL LEATHERY

Roses, Blackcurrant Leaves, Petrichor

Essence and Leather

PARISIAN DOLCE VITA...

When we had just opened our Parisian boutique, one of my colleagues asked me for an hour to pick up two rosebushes from the Bagatelle rose garden sales. He returned to the Palais Royal on his old vintage Vespa, the flower pots on the luggage rack, soaked by a rain shower.

Under my nose, the scent of old roses, the smell of damp earth and green leaves after the rain and the Vespa's exhalations of petrol and leather...

A snapshot of Italian Dolce Vita in the heart of Paris, which I will freeze in a perfume:
Bagatelle Roma.



FEMME EN SMOKING

FLORAL - WOODY SPICY

Black Calla, Cardamom, Incense, Iris

Honey, Cedar, Sandalwood

A BLACK CALLA...

The smell of charcoal gliding over the drawing board, while a young designer, not yet a Grand Couturier, sketches a silhouette similar to a floral chalice, a Black Calla, a woman in a dinner jacket.



HABANERA

AMBER – TOBACCO SPICY GOURMAND

Saffron, Candied Rose, Cuban Tobacco

Mexican Copal Resin, Benzoin, Leather

A SENSUAL BODY TO BODY...

An explosive and torrid amber inspired by the lascivious rhythm of a South American dance, the skins brush against each other and seek each other out, in a sensual game of body to body.

"Habenera" is a procession of *"balsams under tension"* carried by volutes of Cuban tobacco, leather on a Mexican copal accord, saffron and candied rose.



IRIZIA PEARL

WOODY – SWEET FLORAL GREEN

Sandalwood Sap, Rice Vapour, White Pearl Jasmine

Cachemere Wood, Amber, Musk

**A COCOON OF SAP,
SWEET WOOD AND BALMS...**

Between fresh green sap and soft, enveloping balsams, the structure of *"Irizia Pearl"* evokes the pulsations of concentric olfactory spheres, forming a Cocoon, of which it is the fragrant allegory.

All the notes appear as soon as they take flight and never really disappear to make room for others. They all resonate in unison with a heart of White Pearl Jasmine, surrounded by a shell of balsams and sweet woods with a vapour of rice and sandalwood sap.



LES RACINES DU MÂLE

WOODY – AMBERLY LEATHERY

Vetiver, Leather

Incense and Tar Vapour, Guaiac

A POISONOUS AND MYSTICAL VETIVER...

“*Les Racines du Mâle*” is a mystical, venomous vetiver that rises into a complex, resinous, warm and amber woody vapour.

After the 15 weeks of maceration necessary for each of the materials making up the fragrance to fully reveal their beauty and power, a metamorphosis takes place.

In the middle of the vetiver roots grew leather roots.

The product of an olfactory autogenesis, a chimerical note that the perfumer neither conceived nor anticipated, this unexpected “*leathery wave*” extends like a shadow over the composition, bringing it elegance and mystery.



LUMIÈRE FAUVE

DRY WOODS – MUSKY LEATHERY

Absolute African Stone, Moroccan Black Honey

Leather, Tobacco, Cocoa, Animalized Musks

NOT AN AMBER, NOR A CHYPRE... A FAWN.

The most animalistic of our Musks, radical, passionate and incandescent.

In the lion's cage... a feline facing his tamer, dodges the slaps of the whip, in a ballet of swaying steps.

While from the shadows and bleachers rise the scent of tobacco and cocoa, the leather ties hit the dance floor flooded with the light of the spotlights, like an intense accord of ylang-ylang and honey that blinds and inflames the senses.





PIERRE GUILLAUME BODY CARE

OUR FIRST LINE OF PERFUMING BODY CARE

Pierre GUILLAUME inaugurates his first range of bodycare dedicated to the bath ritual through two new products available in six “signature” fragrances from our collection. The hand and body cleansing gel and the perfumed hand and body lotion. In total ten new highly fragrant creations, **eco-responsible formulas, respectful of the skin and predominantly natural**, reaffirming the know-how of the house of PIERRE GUILLAUME PARIS.





AQAYSOS

CLEANSING HANDS & BODY GEL

Sansho berries, Cocoa beans, Woody notes

Size: 250 ml



NEROLI AD ASTRA

CLEANSING HANDS & BODY GEL

Neroli, Agave Flower, Pear

Size: 250 ml



MORNING IN TIPASA

CLEANSING HANDS & BODY GEL

**Wild Lemongrass, Peppermint,
Mediterranean Pine**

Size: 250 ml



LE MUSC & LA PEAU

HANDS AND BODY LOTION

Rosemary Milk, Ylang-Ylang, Musks

Size: 250 ml



NEROLI AD ASTRA

HANDS AND BODY LOTION

Neroli, Agave Flower, Pear

Size: 250 ml



AQAYSOS

CLEANSING HANDS & BODY GEL

Sansho berries, Cocoa beans, Woody notes

Size: 500 ml



LIQUEUR CHARNELLE

CLEANSING HANDS & BODY GEL

Spices, Cognac Accord,

Blond Tobacco, Powdery Wood

Size: 500 ml



MORNING IN TIPASA

CLEANSING HANDS & BODY GEL

Wild Lemongrass, Peppermint, Mediterranean Pine

Size: 500 ml



LE MUSC & LA PEAU

CLEANSING HANDS & BODY GEL

Rosemary Milk, Ylang-Ylang, Musks

Size: 500 ml



NEROLI AD ASTRA

CLEANSING HANDS & BODY GEL

Neroli, Agave Flower, Pear

Size: 500 ml



LIQUEUR CHARNELLE

HANDS AND BODY LOTION

Spices, Cognac Accord,

Blond Tobacco, Powdery Wood

Size: 500 ml



LE MUSC & LA PEAU

HANDS AND BODY LOTION

Rosemary Milk, Ylang-Ylang, Musks

Size: 500 ml



NEROLI AD ASTRA

HANDS AND BODY LOTION

Neroli, Agave Flower, Pear

Size: 500 ml



BONHEUR DU JOUR

**EAU DE TOILETTE ZESTÉE
WITH 15 PLANT EXTRACTS**

**Bergamot, Cananga, Cinnamon, Lemon, Galbanum,
Labdanum, Lavandin, Mandarin, Patchouli, Petit Grain,
Black Pepper, Tagette, Thyme, Exotic Verbena, Yuzu**

Size: 200 ml



EAU DE COURTOISIE

**EAU DE TOILETTE EN FONTAINE DE TABLE
SCENTED REFRESHING COURTESY WATER
FOR HANDS AND BODY**

**Bergamot, Tangerine, Neroli, Gardenia,
Acacia, Cedar and Musk**

Size: 500 ml







PIERRE GUILLAUME L'ATMOSPHÈRE

SCENTED CANDLES AND
HOME FRAGRANCED SPECIALITIES

By entrusting his perfumes to French Candlemakers and relying on **his know-how as an industrial chemical formulator**, Pierre GUILLAUME has been developing since its inception objects intended **to dressed and sign the atmosphere of our places of life.**





AMSTERDAM

SCENTED CANDLE

Plum, BlackTea and Blond Tobacco

Net weight: 240 g



ARUBA

SCENTED CANDLE

Tonka Beans and Gaïac Wood

Net weight: 240 g



CANCÚN

SCENTED CANDLE

Coconut and Copal Resin

Net weight: 240 g



LEAF

SCENTED CANDLE

Patchouli, Mint, and Fig Leaves

Net weight: 240 g



MOJITO

SCENTED CANDLE

Rhum, Strawberries and Mint

Net weight: 240 g



SAIGON

SCENTED CANDLE

Leather and Red Fruit Tea

Net weight: 240 g



BIENVEILLANTE

MESSENGER SCENTED CANDLE

Hay, Incense, Lavender

Net weight: 240 g



FLAVESCENTE

MESSENGER SCENTED CANDLE

Amber, Precious Wood, Leather and Honey

Net weight: 240 g



LA ROSE D'ISPARTA

MESSENGER SCENTED CANDLE

Fruity Rose, Wood, Ambroxan

Net weight: 240 g



NIVEENNE

MESSENGER SCENTED CANDLE

Sandalwood, Heliotrope and Vanilla

Net weight: 240 g



VESPERALE

MESSENGER SCENTED CANDLE

Orange Wood Leather, Bois de Violette

Net weight: 240 g



EBENE CONSTELLATION

ORNAMENTAL SCENTED CANDLE

Leather, Ginger, Ebony wood

Net weight: 1,5 kg



LUNE TONKA

ORNAMENTAL SCENTED CANDLE

Tonka Bean, Cedarwood, Rosewood

Net weight: 1,5 kg



NUIT D'ISPARTA

ORNAMENTAL SCENTED CANDLE

Isparta Rose, Blackcurrant leaves, Mahogany wood

Net weight: 1,5 kg





HIBISCUS

LA GACHETTE - ROOM SPRAY

Hibiscus Flower and Warm Sand

Size: 500 ml



LEAF

LA GACHETTE - ROOM SPRAY

Patchouli, Mint and Fig Leaves

Size: 500 ml



SAIGON

LA GACHETTE - ROOM SPRAY

Leather, Red Fruit Tea

Size: 500 ml



TAIGA

LA GACHETTE - ROOM SPRAY

Siberian Cedar, Bison Herb

Size: 500 ml



TONKA

LA GACHETTE - ROOM SPRAY

Tonka Bean, Caramel, Moroccan Cedar

Size: 500 ml



HESPERIDREAM

PILLOW MIST

Mandarin, Sage, California Poppy Blossom

Size: 50 ml - 100 ml



PILLOW POEM

PILLOW MIST

Grapefruit, Rose-Tea, Peony, Sandalwood

Size: 100 ml



HESPERIDREAM

PERFUMED MIST FOR HOUSEHOLD LINEN

Mandarin, Sage, California Poppy Blossom

Size: 500 ml





REBOOT THE LOO

PRE & POST POO ODOR NEUTRALIZER

Verbena, Liquorice, Mint Leaves

Size: 100 ml



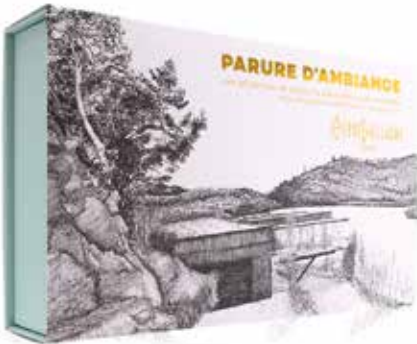
RITUEL AFTER LUST

**DEODORIZING & PERFUMING INFUSION
FOR THE HOME**

Lemon, Peppermint, Coriander, Vetiver, Benzoin,

Cistus, Patchouli, Peruvian Balsam

Size: 100 ml



PARURE D'AMBIANCE

**A SELECTION OF SCENTED PRODUCTS FOR
THE HOUSE, FOR AN ATMOSPHERE INSPIRED
BY "LA MAISON DU LAC"**

Leaf, Hesperidream, Reboot the Loo

Size: 320 X 190 X 70 mm



OUR STORES

PIERRE GUILLAUME PARIS

Palais Royal
13 Rue Jean-Jacques Rousseau - 75001 PARIS



PIERRE GUILLAUME LYON

Quartier Jacobins
1 Rue Émile Zola - 69002 LYON



PIERRE GUILLAUME CLERMONT-FERRAND

Quartier Victoire
17 bis Rue Saint-Gènes - 63000 CLERMONT-FERRAND



PIERRE GUILLAUME PARFUMEUR

Store & Manufacture
25 Rue Pierre Boulanger - 63100 CLERMONT-FERRAND



PIERRE GUILLAUME BELGRADE


Stari Grad
Kralja Petra 75 - BELGRADE



CUSTOMER SERVICE +33(0)1 45 08 46 17

PIERREGUILLAUMEPARIS.COM

 @pierreguillaumeparis  @pierreguillaume_parfumeur

 @pierreguillaume_parfumeur_srb